

RESEARCH ARTICLE

Orientation of native versus translocated juvenile lesser spotted eagles (*Clanga pomarina*) on the first autumn migration

Bernd-U. Meyburg^{1,*}, Ugis Bergmanis², Torsten Langgemach³, Kai Graszynski⁴, Arno Hinz⁵, Ingo Börner⁶, Christiane Meyburg⁷ and Wouter M. G. Vansteelant^{8,9}

ABSTRACT

The ontogeny of migration routines used by wild birds remains unresolved. Here we investigated the migratory orientation of juvenile lesser spotted eagles (LSE; *Clanga pomarina*) based on translocation and satellite tracking. Between 2004 and 2016, 85 second-hatched juveniles (Abels) were reared in captivity for release into the declining German population, including 50 birds that were translocated 940 km from Latvia. In 2009, we tracked 12 translocated juveniles, as well as eight native juveniles and nine native adults, to determine how inexperienced birds come to use strategic migration routes. Native juveniles departed around the same time as the adults and six of eight used the eastern flyway around the Mediterranean, which was used by all adults. In contrast, translocated juveniles departed on average 6 days before native LSEs, and five travelled southward and died in the central Mediterranean region. Consequently, fewer translocated juveniles (4/12) than native juveniles (7/8) reached Africa. We conclude that juvenile LSEs have a much better chance of learning the strategic southeastern flyway if they leave at an appropriate time to connect with experienced elders upon departure. It is not clear why translocated juveniles departed so early. Regardless, by the end of the year, most juveniles had perished, whether they were translocated (10/12) or not (6/8). The small number of surviving translocated juveniles thus still represents a significant increase in the annual productivity of the German LSE population in 2009.

KEY WORDS: Bird migration, Orientation, Satellite-tracking, Translocation

INTRODUCTION

The advent of satellite telemetry and GPS tracking sparked a new age of discovery in animal ecology (Kays et al., 2015). This is especially true for the study of bird migration (Bridge et al., 2011;

Robinson et al., 2010; Wikelski et al., 2007). Tracking entire cross-continental or oceanic journeys of migrant birds has revealed that migrants often adhere to highly complex migration itineraries, which may differ greatly between individuals from the same species or population (Åkesson and Hedenström, 2007; Thorup et al., 2010; Vardanis et al., 2016). Complex migration routines, sometimes requiring accurate navigation toward crucial stop-over and staging sites, may be explained to some extent by relatively simple, genetically determined migration programs that involve one or more bouts of vector-based navigation (Berthold and Terrill, 1991; Mouritsen and Mouritsen, 2000), and some simple behavioural rules, such as aversion to crossing open water and other barriers (Erni et al., 2003; Hake et al., 2003; Kerlinger, 1985; Meyer et al., 2000; Thorup et al., 2003). Such simple mechanisms may be particularly relevant for nocturnally migrating passerines and other solitary migrants. For other migrants, however, including large diurnal migrants such as soaring birds, social learning is likely to play a much more important role. Species such as cranes (*Grus* sp.), white stork (*Ciconia ciconia*), Egyptian vulture (*Neophron percnopterus*), lesser spotted eagle (LSE; *Clanga pomarina*), short-toed eagle (*Circus gallicus*) and European honey buzzard (*Pernis ptilorhynchus*) all depend on guidance by elders to locate strategic flyways or important stop-over sites (Chernetsov et al., 2004; Hake et al., 2003; Mellone et al., 2011; Meyburg et al., 2016; Rotics et al., 2016; Schüz, 1950). It is likely that most birds use a combination of innate vector-based (or more complex) orientation programs and social information, as well as multiple additional cues to facilitate accurate navigation early in life (Åkesson and Hedenström, 2007; Thorup et al., 2010; Wiltschko and Wiltschko, 2015). As Thorup et al. (2010) argued: ‘how else could one account for the complex routes, such as those used by juvenile Eleonora’s falcons *Falco eleonora* travelling to a restricted wintering range in Madagascar, in the absence of experienced elders (Gschweng et al., 2008)?’ However, besides cranes and geese, most social migrants do not travel in family groups, and so it remains unclear how long after dispersal it takes for naive juveniles to encounter elder conspecifics, what they do in the absence of elder guides and how social learning affects their survival.

Outside of the laboratory, the best way to empirically study the role of innate versus external influences on migratory behaviour is through displacement or delayed-release experiments (Perdeck, 1958; Schüz, 1950). Few migratory behaviour studies of displaced birds have been performed using tracking devices (Chernetsov et al., 2004; Thorup et al., 2010; Wikelski et al., 2015; Willemoes et al., 2015). Moreover, very few tracking studies have been conducted on juvenile migrants because naturally higher juvenile mortality rates mean that young birds are likely to die shortly after they are fitted with an expensive transmitter, and also because transmitters may affect juveniles relatively more than adults. So far, juvenile tracking studies have mostly been conducted on large soaring birds, and

¹BirdLife Germany (NABU), PO Box 330451, Berlin 14199, Germany. ²Latvijas valsts meži, Vaigodes iela 1, Rīga LV-1004, Latvia. ³Brandenburg State Bird Conservation Centre, Dorfstr. 34, Buckow, Nennhausen 14715, Germany.

⁴Department of Biology, Free University Berlin, Schreberstr. 8 A, Berlin 14167, Germany. ⁵Agency of Forestry, Vietmannsdorfer Str. 39, Templin 17269, Germany.

⁶Veterinarian practice, Neuer Weg 5, Templin 17268, Germany. ⁷World Working Group on Birds of Prey, 31, Avenue du Maine, Paris 75015, France. ⁸Theoretical and Computational Ecology, Inst. for Biodiversity and Ecosystem Dynamics, University of Amsterdam, Amsterdam, The Netherlands. ⁹Vansteelant Eco Research, Dijkgraaf 35, Bennekom 6721NJ, The Netherlands.

*Author for correspondence (Greifvogelschutz@NABU.de)

© B.-U.M., 0000-0003-1673-4650

This is an Open Access article distributed under the terms of the Creative Commons Attribution License (<http://creativecommons.org/licenses/by/3.0>), which permits unrestricted use, distribution and reproduction in any medium provided that the original work is properly attributed.

although in some species juveniles travel faster than adults (Rus et al., 2017), juveniles from wild populations are usually outperformed by adults (Rotics et al., 2016; Sergio et al., 2014), migratory performance improves with age (Sergio et al., 2014) and juveniles are often guided by elders to migrate (Mueller et al., 2013; Oppel et al., 2015; Rotics et al., 2016; Sergio et al., 2014). In the absence of displacement or delayed-release experiments on juvenile birds, however, it is impossible to disentangle the relative influence of innate behaviours from social information in the development of migratory repertoires in individual birds from natural populations (Muriel et al., 2016; Senner et al., 2015). This knowledge gap must be addressed to develop a comprehensive ontogenetic perspective on migratory orientation (Guilford et al., 2011; Senner et al., 2015; Thorup et al., 2010) and concomitant patterns of migratory connectivity (Cresswell, 2014; Trierweiler et al., 2014), in addition to determining how migration affects population numbers (Hewson et al., 2016; Newton, 2006). A better understanding of migratory development could also help to identify conservation priorities in the annual cycle and life cycle of migrant birds (Hostetler et al., 2015; Vickery et al., 2014).

The present study aimed to determine how translocation affects the route choice of juvenile LSEs (*Clanga pomarina* Brehm 1831) (Lerner et al., 2017) during the first autumn migration. In 2009, 20 solar-powered Argos GPS platform transmitter terminals (PTTs, 22 g) were deployed on juvenile eagles. Twelve of these juveniles were second-hatched juveniles from Latvia that were reared in captivity (hereafter ‘hacked’, see Materials and methods) and translocated approximately 940 km southwestward to supplement the declining population in Brandenburg, Germany. The other eight juveniles were reared in the wild in northeastern Germany. Moreover, of 48 adult LSEs that were tracked since 1994 (Meyburg et al., 1995, 2004a), 10 adults that bred in Germany were still transmitting in 2009. Consequently, for that year, we were able to compare the migration timing and route choice of translocated juveniles, native juveniles and native adults. The eagles were tracked primarily to monitor the effectiveness of hacking and translocation as a conservation measure (Graszynski et al., 2011; Meyburg et al., 2008). Our focus here, however, is to derive fundamental insights from this quasi-experimental study into the factors driving decision-making in a juvenile soaring migrant.

Being among the largest Palearctic soaring migrants, LSEs are especially vulnerable to exhaustion when forced to travel by flapping flight, such as during long overwater flights (Bildstein et al., 2009; Oppel et al., 2015). Consequently, most of the LSE population avoids sea crossings, and migrates over land by thermal soaring (Kerlinger, 1985; Meyburg et al., 2002). Most LSEs that make successful autumn migrations travel along the eastern Mediterranean flyway, from the Bosphorus to Suez and along the Great Rift Valley into central and southern Africa (Bijlsma, 1983; Leshem and YomTov, 1996; Meyburg et al., 1995, 2008; Michev et al., 2011). The use of this eastern migration route is a highly conserved trait in the migration of the LSE, as evidenced by the fact that all adult LSEs that have ever been tracked for more than 1 year (48 individuals), including individuals that were tracked for up to 11 consecutive years (Meyburg et al., 2004a, 2015), used the eastern route every autumn and spring. A small number of adult and juvenile LSEs do migrate along southwestern and southern flyways via the Strait of Gibraltar (Onrubia et al., 2011) or the Strait of Sicily between Italy and Tunisia (Thiollay, 1975; Dejonghe, 1980; Giordano, 1991).

Some juvenile migrant birds are able to compensate for extremely large displacements resulting from either natural causes, such as

extreme weather, or unnatural causes, such as experimental interventions (Thorup et al., 2011). True goal navigation, however, is far more common among adult migrants (Perdeck, 1958), and even such experienced individuals may elicit highly variable responses to displacement (Willemoes et al., 2015), in some cases failing to compensate at all (Kishkinev et al., 2016). Therefore, we did not expect translocated juveniles to compensate for their displacement either by returning to their natal site or by compensatory goal navigation towards the southeastern flyway. Instead, we expected that both translocated and native juveniles would locate the southeastern flyway using social information (Chernetsov et al., 2004; Schüz, 1950). Because Germany is situated at the western limit of the species’ range, and because very few adults breeding to the north and further east pass through this peripheral population on migration, native adults (and non-breeding immatures) should be the main providers of social information for juveniles departing from our study population (Oppel et al., 2015). Therefore, we expected that both translocated and native juveniles would be more likely to learn the eastern route if they departed simultaneously with native elders.

Juveniles that fail to synchronize their departure with elders likely rely on innate, vector-based orientation to find their way to sub-Saharan Africa (Thorup et al., 2003). Although LSEs frequently migrate in mixed-age groups, they do not seem to migrate in family groups (Meyburg and Meyburg, 2007; B.-U.M. and C.M., unpublished data); family group migration is also not a characteristic of other raptor species such as the closely related greater spotted eagle (*Clanga clanga*; Meyburg et al., 2005). Consequently, to maximize the opportunities to learn the route via the Bosphorus and Suez, the juveniles should time their departure to coincide with the departure or passage of adult LSEs, and their innate departure directions should be oriented from the natal area toward the southeastern flyway. We did not expect a difference in timing of departure between native and translocated juvenile LSEs, but we predicted that if translocated and native juveniles departed much earlier or later than adults, they would default to southward and eastward–southeastward departure directions, respectively. As a consequence, translocated juveniles would likely end up in the central Mediterranean flyway if they failed to connect with native adults upon departure (Meyburg et al., 1995, 2008). Given that heavy soaring birds often perish when they attempt long sea crossings (Bildstein et al., 2009; Mellone et al., 2011; Oppel et al., 2015), the failure of translocated juveniles to locate and follow elder guides using the southeastern flyway could constrain the effectiveness of translocation and hacking in reinforcing the declining LSE populations in Germany and elsewhere.

MATERIALS AND METHODS

Lesser spotted eagles in Germany

The LSE is a large soaring raptor and long-distance migrant that breeds in moist woodlands from central Europe to western Russia (Ferguson-Lees and Christie, 2006; Meyburg et al., 2001, 2016). Since 1992, we have tracked 95 LSEs via satellite. The large majority of tracked LSEs leave Europe in September, and all adults use the eastern Mediterranean flyway via the Bosphorus and Suez en route to Africa. A few thousand adults and immatures breeding in the eastern part of the range migrate along the eastern Black Sea flyway. These two routes converge over Turkey and Syria as LSEs travel toward Suez. Few LSEs cross the Mediterranean through the Straits of Gibraltar and via Sicily (Agostini et al., 2004; Onrubia et al., 2011; Giordano, 1991); these flyways are clearly of minor importance compared with the southeastern flyway.

Saving Abel: nestling management for conservation

The western limit of the species' breeding range lies in Germany, where a small population persists despite a major population decline from the 1990s to the 2000s (133 pairs in 1993 to 107 pairs in 2007, 23% decline; Meyburg et al., 2004b, 2008). Since 2001, the breeding population of LSE in the main German stronghold in Mecklenburg-Vorpommern has declined from 92 to 87 breeding pairs (LUNG, 2016). Because the LSE is red-listed in Germany (Grüneberg et al., 2015; Vökler et al., 2014), an action plan was developed to conserve it nationally, including habitat protection measures complemented by a population recovery program (Meyburg et al., 2004b; MLUV, 2005).

LSEs typically lay two eggs, both of which usually hatch. Under natural conditions, however, the second-hatched juvenile is killed by the first-hatched, a process referred to as obligate siblicide or 'Cainism' (after the biblical Cain and Abel struggle; Meyburg, 1974, 2002). Removing the second-hatched chicks before they are killed, rearing them in captivity and then releasing them can be a way of supplementing native productivity, and may help to halt population declines (Meyburg, 1978). Such a program of conservation-focused nest management has been implemented by the 'Saving Abel' project in Germany since 2004 (Meyburg et al., 2008; Graszynski et al., 2011), and between 2004 and 2016, 85 Abels were released in the German state of Brandenburg (Graszynski et al., 2011; B.-U.M. and C.M., unpublished data). This intervention increased the number of birds that fledged from the Brandenburg population by 55.9%, during a time period when only 144 juveniles fledged in the wild. Of these 85 birds, 35 individuals were taken from eyries in Brandenburg, and 50 were translocated from eyries in the core breeding range of LSE in Latvia, some 940 km to the northeast. Most Abels were sourced from populations in Latvia owing to the limited size of the Brandenburg population (ca. 20 pairs; Langgemach et al., 2010).

Translocating and releasing juvenile eagles

The Abels taken from Latvian eyries were initially reared near their natal sites, then transferred to the Riga Zoo until they reached approximately 5 weeks of age, and then flown to Berlin and taken to a release station (53°N, 13°30' E) in the UNESCO-biosphere reserve of Schorfheide-Chorin in Brandenburg. Until 2008, the Abels were captive-reared until they were old and fit enough to compete for food with a nest mate, then fostered to wild breeding parents. In 2009, so as to avoid potential problems with food provisioning and losses owing to predation, the fostering method of releasing birds was replaced by hacking (Sherrod, 1982; Graszynski et al., 2011; Meyburg et al., 2008). The hacking station was situated within the core breeding area of LSE in Brandenburg and within 100 km of all known nests. Release of hacked juveniles took place in late July to mid-August, 5 to 6 weeks before the onset of autumn migration. The young eagles moved around freely after release, and the vast majority remained in the vicinity of the hacking station, where plentiful food is provided, until they start to migrate (Graszynski et al., 2011; Meyburg et al., 2008).

Hatching date, date of placement in the hacking station, release date and date of departure from the hacking station were recorded for all translocated juveniles (Table S1). For comparison, we recorded fledging dates of wild juveniles in Latvia as determined from nest camera footage ($n=4$). Both translocated and native juveniles were fully grown with fully developed wings at the time that translocated juveniles were released from the hacking station, indicating no delay or advance in physical development of translocated, hacked juveniles versus native juveniles.

Tracking juvenile and adult eagles

We tracked 12 translocated juveniles (Abels) and eight native (wild) juveniles (Cains) in 2009 as they migrated from Germany (Table 1). Deployment of the transmitters took place approximately 1 week before fledging, for both the native and the translocated eagles (Table S1). To understand juvenile behaviour in the context of elder migration strategies, we used tracking data from 10 adult LSEs with active PTTs in 2009 (Table 1), seven of which had already been tracked for several years and three of which were trapped and marked in 2009. For comparison, we included satellite-tracking data of a non-translocated juvenile that fledged from an eyrie in Latvia in 1993 and an adult breeding in Latvia in 1997.

For each bird, we determined the date of departure as accurately as possible based on GPS fixes, complemented by Argos/Doppler fixes (LC 3,2,1, as well as lower quality fixes with coordinates at a bird's nest site or at the hacking station) when there were gaps in the GPS data. Visual examination of the tracks revealed that all birds used one of the previously described flyways to Africa: the southwestern flyway (via Gibraltar), the southern/central flyway (via the central Mediterranean) or the southeastern flyway (via the Bosphorus and Israel). We recorded the longitude and date of passage at three latitudinal thresholds, chosen to reflect three distinct milestones in the first outbound migration: successful departure, completion of migration through Europe, and arrival in Africa after crossing or circumventing the Mediterranean Sea. Finally, based on expert interpretation of the GPS and Argos data, we determined the tracks that ended owing to mortality before 31 December 2009. The causes of mortality of these and other tracked young and adult birds will be discussed in another paper. Here, mortality was confirmed in the field or assumed to be highly likely when tracks ended just before or during crossing of the sea or the Sahara, at known hot-spots for illegal shooting of migrant birds, or if a bird remained stationary for a long period of time before contact was lost.

Analyses

Adult LSEs travelled along highly similar routes, with all individuals using the southeastern flyway. Our main interest was to determine how the origin and timing of migration by juveniles affects the extent to which their migration behaviour diverges from that of the native adults. Thus, we determined the extent to which birds using each of the three flyways differed between translocated juveniles and native eagles using a Fisher's exact test (Freeman and Halton, 1951). We ran ANOVAs to determine whether the date and longitude at departure and at latitudinal milestones differed between translocated and native juveniles, between native juveniles and adults, and between translocated juveniles and native adults, while adjusting for the chosen flyway. Using a log-rank test, we compared survival between groups and between flyways.

The influence of topography and wind conditions at departure

Differences in local topography between departure locations and in weather conditions between the days that eagles departed may drive part of the observed variation in route choice. Therefore, we mapped the routes of all LSEs relative to the topography of the surrounding landscape at departure. In addition, we produced detailed maps to explore the influence of topography on route choice over eastern Europe and eastern Africa.

To detect confounding effects of westward and eastward winds on the longitudinal displacement at departure, we annotated all tracks of birds departing from Germany with the westward/eastward wind component from the NCEP-NCAR reanalysis model (Kalnay

Table 1. Overview of tracking data from 30 lesser spotted eagles in 2009, including date and longitude at departure, date and longitude at three latitudinal milestones (Fig. 2), and date of death, if this occurred in 2009

	Device	Flyway	Departure		Crossing 50°N		Crossing 40°N		Crossing 30°N		Death date (mm-dd)
			Date (mm-dd)	Longitude (°E)	Date (mm-dd)	Longitude (°E)	Date (mm-dd)	Longitude (°E)	Date (mm-dd)	Longitude (°E)	
Native adults	B23196	SE	–	–	–	–	–	–	–	–	–
	B36235	SE	09-19	13.98	10-01	30.76	10-01	30.764	10-07	33.48	–
	B41861	SE	09-17	14.66	09-23	21.27	10-04	34.646	10-09	33.49	–
	B64614	SE	09-17	15.05	09-21	23.74	09-29	30.412	–	–	10-01
	B74996	SE	09-12	13.48	09-20	22.07	09-28	29.793	10-05	33.53	–
	B80936	SE	09-07	13.81	09-10	20.79	09-20	30.269	09-25	32.95	–
	B83263	SE	09-19	21.35	09-19	21.35	09-27	34.317	09-30	33.03	–
	B83266	SE	09-19	13.60	09-23	17.96	10-09	30.582	–	–	10-12
	B84370	SE	09-16	12.10	09-25	25.44	10-07	30.283	10-14	32.16	–
	B94756	SE	09-26	12.87	10-03	24.35	10-14	32.743	10-24	32.92	–
	B94737	SE	09-15	13.43	09-23	24.87	09-30	30.721	10-06	33.85	11-04
	B94738	S	09-21	12.57	09-24	20.79	09-30	20.059	10-06	27.36	–
Native juveniles	B94742	SW	09-14	13.69	09-18	7.83	09-26	–0.414	10-12	–5.92	10-24
	B94743	SE	09-21	13.47	09-25	32.69	10-01	30.993	10-09	33.37	–
	B94744	SE	09-26	13.20	10-04	26.61	10-21	26.464	11-12	33.69	11-27
	B94747	SE	09-12	13.47	09-20	25.15	09-28	30.072	10-04	33.70	10-25
	B94748	SE	09-16	13.40	09-21	20.70	09-29	30.159	10-05	33.14	10-27
	B94749	SE	09-16	13.41	09-23	25.62	09-29	30.102	–	–	09-29
	B94732	SW	09-10	13.50	09-16	8.27	09-22	3.9488	–	–	09-23
	B94734	SE	09-17	19.57	09-20	24.63	10-06	30.001	10-13	33.70	11-22
Translocated juveniles	B94735	S	09-11	13.50	09-13	15.29	09-28	15.821	–	–	10-12
	B94736	S	09-10	13.49	09-12	13.80	–	–	–	–	09-21
	B94739	SE	09-16	13.28	09-20	17.94	09-26	30.073	10-02	32.73	–
	B94740	S	09-11	13.50	09-15	16.67	–	–	–	–	10-05
	B94741	SE	09-11	13.48	09-18	15.49	09-28	29.897	10-04	33.25	–
	B94745	S	08-20	–	–	–	–	–	–	–	09-02
	B94746	SW	09-11	13.48	09-18	11.15	09-27	–0.244	10-11	–4.38	12-04
	B94750	S	09-11	13.50	09-19	12.94	09-29	16.237	–	–	10-11
	B94751	S	09-11	13.50	09-12	13.25	09-22	8.7673	–	–	09-24
	B94759	SW	09-10	13.49	09-17	8.20	09-25	–0.328	–	–	09-29

Tracking data of adult B23196 included many large gaps such that departure and passage dates could not be determined, and the bird was excluded from all analyses. Translocated juvenile B94734 left the hacking station on 25 August 2009 and stayed in eastern Poland between 30 August and 17 September 2009, when it started its long-distance migration. Translocated juvenile B94745 departed from Germany exceptionally early, died in Switzerland shortly thereafter, and was therefore excluded from our analyses as a behavioural and statistical outlier.

et al., 1996; Kemp et al., 2012). To do this, we linearly interpolated u-wind components from the 925 mB pressure level (corresponding to an average flight altitude of approximately 700 m) across the 2.5°×2.5° NCEP grid to each GPS fix obtained north of latitude 50° N. We then ran generalized linear regression models to determine the relative effect of age, geographic origin (i.e. native versus displaced), and the mean amount of westward/eastward wind experienced north of latitude 50°N on the longitude at which birds crossed latitude 50°N. Next, we separately tested for the influence of westward/eastward side winds on the longitudinal displacement at departure for each group of eagles. In addition, we investigated whether selection of wind conditions could have affected departure timing by plotting departures on a graph of daily wind conditions at 12:00 UTC during September 2009 in eastern Germany (53.5°N, 13.5°E).

Fig. 1 and all analyses presented in Figs S1–S6 and Tables S4 and S5 were produced using the R Language for Statistical Programming (v3.3.0, R Foundation for Statistical Computing, Vienna, Austria). We used the ‘ggplot2’ package to produce Fig. 1 (Wickham, 2009). Figs 2–3, ANOVAs and survival analyses were produced using SAS software (v9.4, SAS Institute, Cary, NC, USA).

RESULTS

All native juveniles and adults and translocated juveniles left Germany. We excluded one adult (B23196; Table 1) from analysis

in this paper because gaps in the data prohibited accurate quantification of the departure and passage timing for this bird. Translocated juvenile B94734 left the hacking station on 25 August 2009, and stopped over in northern Poland from 30 August 2009 until 17 September 2009. We considered this initial displacement as a pre-migratory move, and used 17 September 2009 as the effective departure date (Fig. 1, Table 1). One translocated juvenile, B94745, left the hacking station on 20 August 2009 (Table S1), moved to Switzerland on 28 August 2009 and starved shortly thereafter (confirmed in the field). It is unclear whether this bird was truly in ‘migration mode’ at the time it left Germany. In any case, we excluded the data for this bird from all analyses as a statistical outlier (Fig. 1, Table 1).

Table 2 summarizes the number of birds, their timing and longitude at departure and when they crossed each latitudinal threshold per group within each flyway (see Table S2 for summary statistics across all flyways per group in and Table S3 across all groups per flyway).

Route choice of translocated and native juvenile LSEs

The majority of birds using the southern/central flyway were translocated juveniles, and a three-way Fisher’s exact test (Freeman and Halton, 1951) confirmed a highly significant difference in the proportion of translocated juveniles versus native birds (including native juveniles and native adults) using each of the three flyways

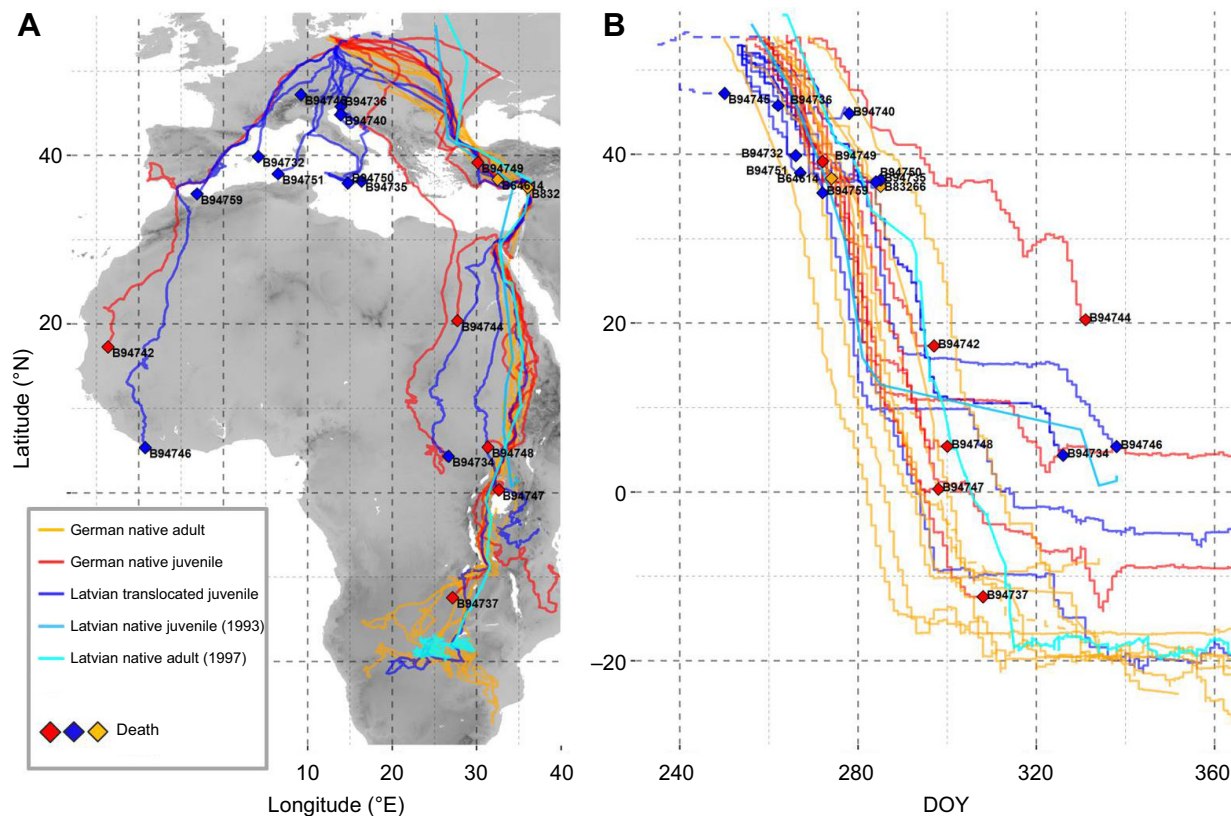


Fig. 1. Routes and timing of migration by 12 juvenile lesser spotted eagles (LSEs) translocated from Latvia to Germany (dark blue) compared with eight native juvenile LSEs (red) and 10 native adult LSEs (orange) in autumn 2009. In addition, we mapped and graphed older tracking data (light blue) of a native Latvian juvenile tracked in 1993 and a native Latvian adult tracked in 1997 (bright blue). (A) The map shows migration routes; labelled diamonds indicate locations where birds died. (B) Migration timing is shown as the latitude of each GPS fix in relation to the day of the year (DOY; 1–365, whereby 250=7 September and 300=27 October); mortality events are indicated by labelled diamonds. Dashed tracks indicate exceptionally early movements by B94734 and B94745 that were not included in our analyses because they were deemed to be behavioural and statistical outliers. Tracks that terminate before the end of the year but are not labelled with a diamond (e.g. Latvian native juvenile in 1993 and some native German adults in 2009) are from birds that survived, but for which a gap in data occurred at year end.

($P=0.003$; Fig. 1). For comparison, we show that one juvenile and one adult that were tracked from Latvia in 1993 and 1997 used the eastern detour as well (Fig. 1A), although the overland detour of the juvenile was not well detailed owing to the low resolution of the tracking data.

As all birds departed from eastern Germany, ANOVA revealed no significant difference in longitude between translocated juveniles, native juveniles and native adults at departure (Fig. 2, Table 3). The different use of flyways between groups was, of course, reflected in significant differences in the longitude at which eagles crossed latitudinal thresholds. Translocated juveniles crossed latitude 50°N significantly further west than both native juveniles (Fig. 2, Table 3) and native adults (Fig. 2, Table 3), which mostly flew eastward north of latitude 50°N . On average, native juveniles crossed each latitudinal threshold at the same longitude as native adults (Figs 1 and 2, Table 3).

At 40°N , the difference in longitude between translocated juveniles and native adults, and between translocated and native juveniles remained significant, though only marginally so between the juvenile groups (Fig. 1, Table 3). At 30°N , the differences in longitude between groups were no longer significant. This increasing overlap in longitude between translocated and native juveniles with decreasing latitude was partly due to one translocated and one native bird that abruptly changed course southward while travelling over central Europe, moving away from the typical

migration corridor of adult LSEs, and ending up using the central flyway (Fig. 1A). The main reason for the eventual overlap in longitudinal distributions of each group in Africa, however, was the high mortality of translocated juveniles that attempted to cross the Mediterranean (see ‘Mortality between groups and flyways’). To account for the influence of mortality, we included flyway as a covariate in the ANOVA, and this accounted for most of the differences in longitude between groups (Table 4). Only when crossing latitude 50°N were translocated juveniles flying significantly further west than native juveniles within the same flyway (Table 4).

Route choice and migration timing

An ANOVA revealed that translocated juveniles initiated migration, on average, 6 and 5 days in advance of native juveniles and native adults (Figs 1B and 2A, Table 3), respectively, and crossed latitude 50°N approximately 7 and 6 days before native juveniles and native adults (Table 3), respectively. The difference in the timing of migration between translocated juveniles and native juveniles and adults was not significant by the time they reached 40°N and 30°N (Table 3). The only juvenile and adult that have been tracked from Latvia departed around 17 September 1993 and 21 September 1997, respectively, comparable to the departure timing of native juveniles and native adults from Germany in 2009.

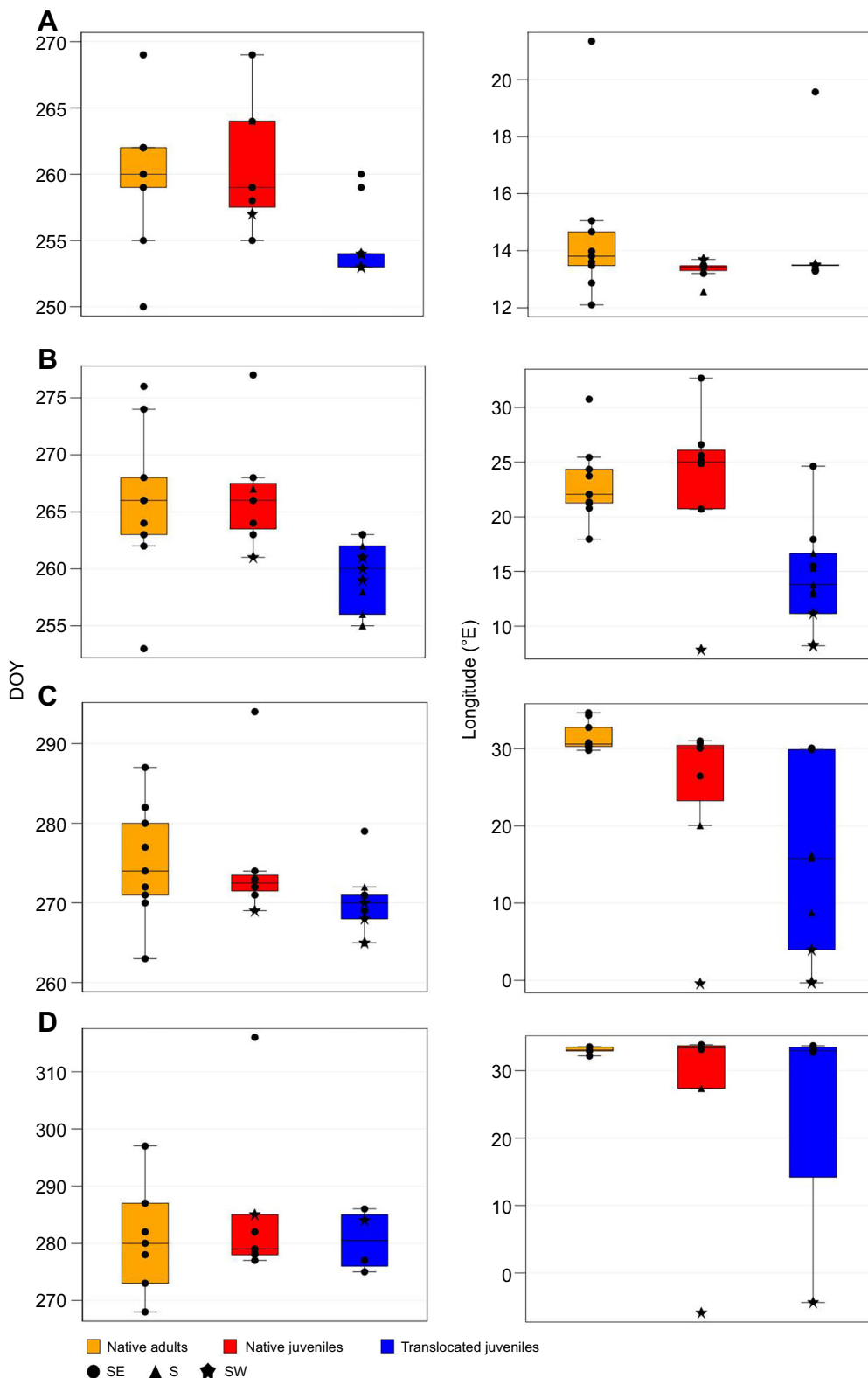


Fig. 2. Day of year (DOY, 1–365) and longitude at which native adults (orange), native juveniles (red) and translocated juveniles (blue) migrating from Germany departed on migration and crossed specific latitudes. (A) Departure, (B) 50°N, (C) 40°N and (D) 30°N. Boxplots show median (bold line), interquartile range (IQR, colored box) and 1.5×IQR (whiskers). Points show individual data points according to flyway (symbol).

An additional ANOVA, including only flyway as an explanatory variable, revealed that the timing of the departure differed between birds using different flyways ($P=0.033$), whereby birds using the southeastern flyway departed ~4.3 days later than those travelling south ($P=0.049$) and ~5.5 days later than those travelling southwest ($P=0.031$). When we accounted for differences in timing between flyways by including flyway as a covariate in the ANOVA between

groups, the differences in the timing at which translocated juveniles, native juveniles and native adults cross each latitudinal threshold were no longer significant (Table 4). Differences in route choice between groups were thus strongly linked to differences in the timing of each group. It is worth noting that two of three translocated eagles that used the southeastern flyway departed several days later than most other translocated eagles, with the timing of the departure

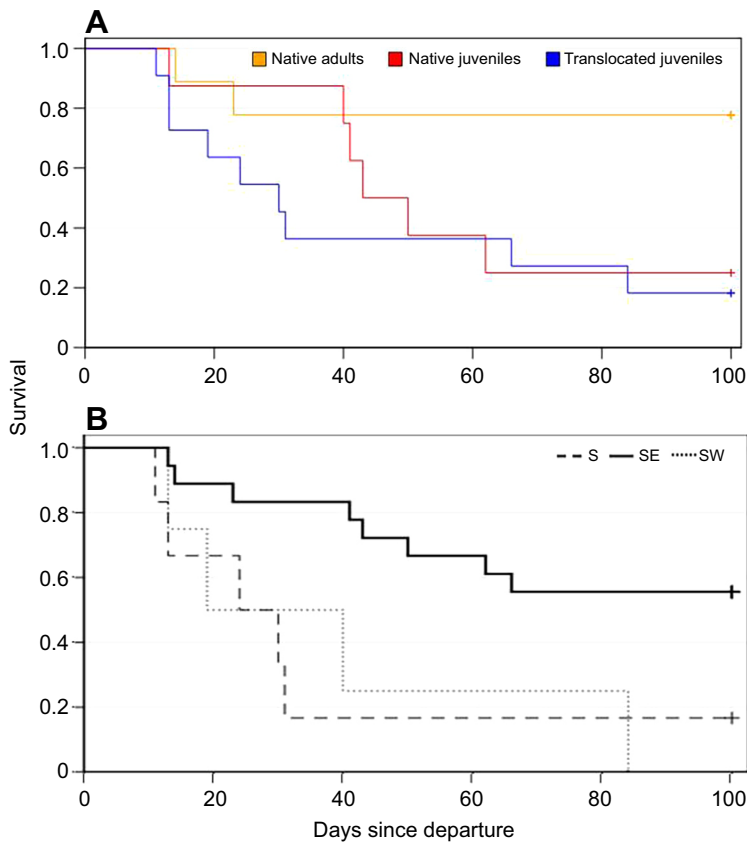


Fig. 3. LSE survival during the first 100 days after departing on migration. (A) Per group; (B) per flyway.

being similar to that of native juveniles and adults (Table 1). Moreover, the only native juvenile to end up in the southwestern flyway departed several days earlier than all other native juveniles (Table 1), and the only native juvenile to end up in the southern flyway was one of the latest juveniles to depart, departing 2 days later than eight out of nine native adults (Table 1).

The influence of topography and wind conditions at departure

We observed no clear relation between topography and travel direction at the start of the journey (Fig. S1). The eagles seemed to avoid high mountain ranges such as the Alps and the Carpathians in Europe (Figs S1 and S2), and migration routes were clearly shaped

by the Great Rift Valley and lakes in eastern Africa (Fig. S3). Topography thus seemed to influence migration routes at local to regional scales, but it did not seem like native and translocated juveniles are funnelled along different routes by topographical features upon departure from Germany.

Generalized linear regression models revealed small but significant differences in the longitude at which birds crossed latitude 50°N owing to side wind influence at departure, in addition to the large difference between eagles of different origin (Fig. S4, Table S4). The influence of side winds was greater for juveniles than for adults (Table S5), as native adults flew east–southeast under a wide range of wind conditions (Fig. S4). When separating models between groups, we only found a significant effect of side winds on

Table 2. Summary statistics for timing (DOY) and longitude at which translocated juveniles, native juveniles and native adults departed on migration, and when they crossed three latitudinal milestones

		SW						S						SE					
		DOY			Longitude (°E)			DOY			Longitude (°E)			DOY			Longitude (°E)		
		N	Mean	s.d.	Mean	s.d.		N	Mean	s.d.	Mean	s.d.		N	Mean	s.d.	Mean	s.d.	
Translocated juveniles	Departure	3	253.3	1	13.5	0	5	253.8	0	13.5	0	3	257.7	3.2	15.4	4			
	50°N	3	260	1	9.2	2	5	257.2	3	14.4	2	3	262.3	1.2	19.4	5			
	40°N	3	267.7	3	1.1	2	3	269.3	4	13.6	4	3	273	5.3	30	0			
	30°N	1	284	–	–4.4	–	0	–	–	–	–	3	279.3	5.9	33.2	1			
Native juveniles	Departure	1	257	–	13.7	–	1	264	–	12.6	–	6	260.7	5	13.4	0			
	50°N	1	261	–	7.8	–	1	267	–	20.8	–	6	267.3	5	25.9	4			
	40°N	1	269	–	–0.4	–	1	273	–	20.1	–	6	276	8.9	29.8	2			
	30°N	1	285	–	–5.9	–	1	279	–	27.4	–	5	286.4	17	33.6	0			
Native adults	Departure	–	–	–	–	–	–	–	–	–	–	9	259.9	5.2	14.5	3			
	50°N	–	–	–	–	–	–	–	–	–	–	9	265.8	6.8	23.1	4			
	40°N	–	–	–	–	–	–	–	–	–	–	9	275.1	7.2	31.5	2			
	30°N	–	–	–	–	–	–	–	–	–	–	7	280.7	9.4	33.1	1			

Table 3. Results of ANOVAs comparing timing and longitude at departure, and at each of three latitudinal milestones between lesser spotted eagle groups

Threshold	Overall group effect		Translocated juveniles versus native juveniles				Native juveniles versus native adults				Translocated juveniles versus native adults			
	Timing (DOY)	Longitude (°E)	Timing (DOY)		Longitude (°E)		Timing (DOY)		Longitude (°E)		Timing (DOY)		Longitude (°E)	
	Diff.	<i>P</i> _{adj.}	Diff.	<i>P</i> _{adj.}	Diff.	<i>P</i> _{adj.}	Diff.	<i>P</i> _{adj.}	Diff.	<i>P</i> _{adj.}	Diff.	<i>P</i> _{adj.}	Diff.	<i>P</i> _{adj.}
Departure	0.007	0.442	−5.9	0.014	0.7	0.720	0.7	0.929	−1.2	0.410	−5.2	0.027	−0.5	0.822
50°N	0.007	0.001	−7.1	0.013	−8.7	0.004	0.7	0.952	0.0	1.000	−6.4	0.022	−8.8	0.003
40°N	0.212	0.005	−4.8	0.317	−9.9	0.112	−0.4	0.993	−6.8	0.338	−5.1	0.247	−16.6	0.004
30°N	0.699	0.472	−4.6	0.778	−3.2	0.913	4.4	0.731	−6.1	0.647	−0.2	0.999	−9.3	0.484

Overall factor (=group) effect related *P*-values and pairwise differences between groups, including associated significance assessments, are shown. Significant differences (*P*<0.05) are in bold. Adjusted *P*-values take into account multiple comparisons (all-pairwise combinations of group differences, Tukey–Kramer adjustment). DOY, day of year.

longitudinal displacement of native juveniles (Fig. S5, Table S5). However, that effect is at least partly due to the fact that departures of native juveniles were less synchronized in time than those of translocated juveniles, and therefore occurred under a much wider range of wind conditions. Moreover, under similar wind conditions, native juveniles still reached 50°N significantly further east than translocated juveniles (Fig. S4). Translocated juveniles also departed in a wide variety of directions despite wind conditions being similar on most departure dates (Figs S4 and S6). The highly synchronized departure of half of the translocated eagles on 11 September 2009 may have been triggered by a change from southerly to northerly winds (Fig. S6). However, it is unclear how selectivity for northerly winds is advantageous, as another large departure event, including two translocated juveniles, two native juveniles and three native adults on 16 and 17 September 2009, was also associated with northerly winds (Fig. S6), but with most of those birds flying to the east or southeast, instead of to the south.

Mortality between groups and flyways

In all but one case, LSEs only reached Africa if they managed to cross the Mediterranean at Gibraltar along the southwestern flyway or migrated across the Bosphorus and Suez along the southeastern flyway (Fig. 1); native juvenile B94738 survived a long sea crossing from southern Greece to Libya (Fig. 1B, Table 1). In other words, there was a high rate of mortality in the Mediterranean region among translocated juveniles and native juveniles (Fig. 3A) along the southern and southwestern flyways (Fig. 3B). A log-rank test of survival rates confirmed that the mortality of translocated juveniles was significantly higher than that of native adults, but not different from that of native juveniles (Table 5). Only two translocated and two native individuals survived until the end of 2009 (Table 1), reaching the general wintering area in central or southern Africa that

was also used by the seven surviving adults (Fig. 1B). Across groups, mortality along the southeastern flyway was significantly lower than along the southern or southwestern flyways (Table 6).

DISCUSSION

Displacement experiments can greatly advance our understanding of migratory orientation in wild birds (Thorup et al., 2011; Guilford et al., 2011). Our findings demonstrate that the strategic use by LSEs of the eastern Mediterranean flyway and the Rift Valley has no clear genetic basis and exists on the basis of social learning. Translocated and native juvenile LSEs departing from Germany only managed to locate the southeastern flyway if they departed during the main migration period of native adults. Two of three translocated birds that made use of the southeastern flyway departed from Germany at the same time as native juveniles and adults, meaning they were more likely to encounter experienced conspecifics upon departure. In contrast, all other translocated juveniles migrated southward approximately 5 days in advance of native adults (and 6 days in advance of juveniles). Ideally, this experiment should be repeated in multiple years to better understand the influence of confounding factors (e.g. release location, weather) on departure decisions and route choice (Shamoun-Baranes et al., 2006). We found no convincing evidence, however, that the differences in timing and route choice between each group of eagles were related to the location of the hacking station relative to wild eyries, or to topography or wind conditions at departure (Walls et al., 2005). The eagles did appear to prefer northerly winds for departure, but then departed in different directions under similar wind conditions depending on their group-specific migration timing. We thus conclude that departure timing and route choice of juvenile LSEs were interlinked mainly because of the timing of social learning opportunities, and not because of changing weather conditions.

Table 4. Results of ANOVAs comparing timing and longitude at departure, and at each of three latitudinal milestones between lesser spotted eagle groups, whereby ‘flyway’ (SE, SW and S) was included as a covariate

Threshold	Overall group effect		Translocated juveniles versus native juveniles				Native juveniles versus native adults				Translocated juveniles versus native adults			
	Timing (DOY)	Longitude (°E)	Timing (DOY)		Longitude (°E)		Timing (DOY)		Longitude (°E)		Timing (DOY)		Longitude (°E)	
	Diff.	<i>P</i> _{adj.}	Diff.	<i>P</i> _{adj.}	Diff.	<i>P</i> _{adj.}	Diff.	<i>P</i> _{adj.}	Diff.	<i>P</i> _{adj.}	Diff.	<i>P</i> _{adj.}	Diff.	<i>P</i> _{adj.}
Departure	0.113	0.401	−4.8	0.094	1.32	0.419	1.43	0.788	−0.9	0.630	−3.4	0.357	0.41	0.931
50°N	0.153	0.043	−5.3	0.130	−4.9	0.036	1.6	0.788	2.3	0.405	−3.6	0.439	−2.6	0.429
40°N	0.734	0.266	−2.8	0.712	−0.9	0.754	0.8	0.967	−1.4	0.486	−2.0	0.869	−2.3	0.249
30°N	0.660	0.453	−5.8	0.725	0.1	0.978	5.2	0.716	0.3	0.546	−0.6	0.997	0.4	0.512

Values represent adjusted-for-flyway differences between groups. Overall factor (=group) effect related *P*-values and pairwise differences between groups, including associated significance assessments, are shown. Significant differences (*P*<0.05) are in bold. Adjusted *P*-values take into account multiple comparisons (all-pairwise combinations of group differences, Tukey–Kramer adjustment). DOY, day of year.

Table 5. Log-rank test results (test statistics and *P*-values) assessing survival between translocated juveniles, native juveniles and native adults until 100 days post-departure

Overall assessment of homogeneity between groups	Pairwise comparisons between groups		
	Native adults versus native juveniles	Native adults versus translocated juveniles	Native juveniles versus translocated juveniles
6.5449 <i>P</i>=0.0379	3.0041 <i>P</i> =0.1928	6.4012 <i>P</i>=0.0306	0.7773 <i>P</i> =0.6519

P-values for pairwise comparisons are adjusted, taking into account multiple comparisons (Tukey–Kramer adjustment). Significant findings (*P*<0.05) are in bold.

Migration timing is a rough proxy for the likelihood of juveniles encountering other LSEs, and none of the birds we tracked interacted directly with each other during migration (i.e. they migrated separately). The main exodus of LSEs occurs within a short period of time, however, as demonstrated by the similarity in departure dates of native juveniles and adults from Germany and Latvia (Fig. 1), and by the fact that 90% of all LSEs migrating through Israel pass within a period of 2 weeks, more than half passing within just a few days, and with the peak day accounting for over 20% of the total annual passage (Shirihai et al., 2000; Krumenacker, 2012). *Clanga* species are not known to migrate in family groups (Meyburg et al., 2005). Assuming that juveniles fledging in the peripheral population of Germany have relatively few opportunities to encounter passers-by, the fact that translocated, hacked juveniles departed 6 days before native juveniles and adults must have negatively affected the likelihood of translocated individuals to connect with native conspecifics or other eagles upon departure.

Contrary to our expectations, translocated juveniles departed very early in 2009, but also in a highly synchronized manner compared with native adults and juveniles, with six of the translocated juveniles departing on 11 September 2009. The access to unlimited amounts of food at the hacking stations before and after release could enable hacked juveniles to deposit fat stores faster than conspecifics that are raised in the wild (Muriel et al., 2016). The fact that these birds lived communally at the hacking station, in contrast to wild eagles, leads us to the hypothesis that social cues caused the striking synchrony in departure, whereby one or a few restless individuals could have instigated the departure of others. In the wild, eagles might also be induced to migrate when they see conspecifics passing by, which could help to explain how adults synchronize their departures. The same could be true also for fostered, translocated, Latvian juveniles. In 2007, two out of three tracked individuals migrated over the Bosphorus (Meyburg et al., 2008), where most successful LSE outward migration appears to occur. It remains unclear, however, why synchronization of departures of hacked eagles is not the same in all years (Graszynski et al., 2011),

Table 6. Log-rank test results (test statistics and *P*-values) assessing survival between different flyways

Overall assessment of homogeneity between flyways	Pairwise comparisons between flyways		
	SE versus S	SE versus SW	S versus SW
8.7612 <i>P</i>=0.0125	7.7259 <i>P</i>=0.0150	7.5296 <i>P</i>=0.0167	0.0787 <i>P</i> =0.9575

P-values for pairwise comparisons are adjusted, taking into account multiple comparisons (Tukey–Kramer adjustment). Significant findings (*P*<0.05) are in bold.

whether hacked birds depart earlier and in suboptimal directions compared with adults in all years, and how internal and external cues interact to modulate departure timing in native and translocated birds (Shamoun-Baranes et al., 2006). There remain many exciting opportunities for further research, using larger tracking datasets spanning multiple years and decades.

Route choice in the absence of elder conspecifics

Young eagles that utilized the southwestern flyway departed early compared with juveniles and native adults using other flyways; they traveled westward, apparently irrespective of wind direction, immediately upon departure (Figs S3.1 and 3.2). The initial decision to depart westward, which is necessary for birds to end up in the southwestern flyway, has previously been suggested to have a genetic basis, an innate strategy that was more widespread when LSE were perhaps breeding farther west in Europe and when more were overwintering in West Africa (Onrubia et al., 2011). However, it is also possible that some juveniles found their way to Gibraltar by following other species of soaring migrants, or by following the Spanish coastline after entering the Iberian peninsula (Fig. 1A), as do other large soaring migrants (Mellone et al., 2011; Premuda et al., 2007). Most translocated juveniles that migrated too early to benefit from social learning departed in a southward direction, and probably had fewer opportunities to encounter experienced conspecifics or other soaring migrants compared with those that progressed towards the much busier flyways over Gibraltar and the Bosphorus. The danger of leaving early is also highlighted by one of the birds that was excluded from our analyses (B94745), which moved southward after an extremely early departure in mid-August, and died in Switzerland before any of the other translocated individuals departed on migration. Another (B94734) that departed extremely early from the hacking station initially moved eastward to Poland, where it stopped over for more than 2 weeks before departing on a concerted migration. It is unclear what motivated this bird to travel east so early, and whether that is representative of its innate migratory direction. Regardless, B94734 located the eastern flyway after leaving Poland, where there is still a large population of LSEs providing ample social learning opportunities. There was only one translocated individual that departed on 11 September 2009 that managed to locate the eastern detour. Overall, it therefore seems that the innate migratory directions of translocated birds are southward, with extremes to the west and the east.

Unfortunately, because nearly all native juveniles departed around the same time as native adults, we cannot reliably infer the innate departure directions of native juveniles. We do note one native juvenile that departed Germany very late (21 September 2009) and in an eastward direction abruptly switched course and traveled southwestward across Europe until it reached the Mediterranean coast (B94738). It is likely this bird defaulted to its innate migration program or followed another poorly navigating individual after it failed to keep up with experienced adults over Europe (Rotics et al., 2016). In either case, this bird and the individual that traveled to the southwest strongly suggest that innate departure directions of native juveniles are also highly variable and not necessarily oriented towards the eastern detour.

Other recent raptor migration studies suggest that social learning maintains strategic overland soaring migration flyways elsewhere, as shown for juvenile short-toed eagles learning the extremely detoured migration northward out of Italy in autumn before heading south through France and Spain into Africa (Agostini et al., 2016; Mellone et al., 2016). If the opportunities for juveniles to encounter experienced adults upon departure are limited in the peripheral

German population, then this may limit the viability of the population and hinder westward expansion of the breeding range. Such a link between migratory behaviour and population dynamics has been demonstrated for a peripheral population of Egyptian vultures in the Balkans, where juveniles ended up traveling across and drowning in the eastern Mediterranean Sea because they failed to connect with experienced adults after departing from their natal sites (Oppel et al., 2015).

Mortality and implications for translocation and hacking

Most juveniles that failed to locate the southeastern flyway died, probably because of starvation or persecution, after spending up to 7–10 days looking for a shorter crossing or possibly waiting for more favorable wind conditions (Gill et al., 2014; Thorup et al., 2006). LSEs are thus very reluctant to cross large stretches of open water, a characteristic seen also in juvenile short-toed eagles reared in Italy when they fail to learn the strategic detour around the Mediterranean through Gibraltar from elder conspecifics (Mellone et al., 2016). However, although short-toed eagles that fail to learn the northward route out of Italy may establish wintering sites on Sicily, LSEs are unable to survive the winter in Europe (Mellone et al., 2016). Those LSEs that became stuck at the northern Mediterranean coast probably died soon thereafter because they relied heavily on flapping flight while flying along the coast, thus exhausting their energy reserves faster than they would have by travelling along another flyway. The danger of crossing the sea is evidenced by the fact that out of three juvenile LSEs that attempted a long sea crossing, two died by drowning, similar to what happens to juvenile Egyptian vultures from the Balkans when they fail to learn an overland route from elder conspecifics (Oppel et al., 2015).

There was no significant difference in survival rates of translocated juveniles and native juveniles after 100 days, suggesting that although translocated birds from Latvia have a clear disadvantage in locating the southeastern flyway, the loss of translocated birds across the Mediterranean seems to be compensated for by other causes of mortality among native juveniles in Africa. By the end of 2009, two of 12 translocated juveniles survived compared with two of eight native juveniles. Several birds using the southwestern or southeastern flyway might have perished because of exhaustion or starvation, including those that perished in the Sahara, and several of the birds died in sub-Saharan Africa. Additional tracking efforts are needed to determine the relative contribution of natural and anthropogenic threats to mortality (1) along different flyways (Hewson et al., 2016), (2) at different stages of the annual cycle (Klaassen et al., 2014) and (3) during different life stages of this long-lived species (Meyburg and Meyburg, 2009), as well as to identify possible mechanisms of compensatory mortality between groups with different migratory behaviour.

Ultimately, the fact that several translocated birds survived their first migration suggests that the diminishing rate of population declines in LSEs in Germany in recent years is partly due to translocation and hacking efforts (Graszynski et al., 2011; Meyburg et al., 2008). All translocated juveniles were second-hatched juveniles (Abels) that would only have fledged in extremely rare instances, if not taken from their eyries (Meyburg, 1974, 1978), and even the small absolute numbers of survivors constitute a significant supplement to the relatively small Brandenburg LSE population (Böhner and Langgemach, 2004; Langgemach et al., 2010; Graszynski et al., 2011; LUNG, 2016). Although we do not know how often it happens, some translocated eagles do become breeders. The translocated female B94739, which survived almost 5 years, occupied a new territory in northeastern Poland in 2013. One color-

ringed Latvian male that was translocated in 2009 (but not satellite-tracked) was first camera trapped at the hacking station when it was 2 years old, and bred successfully as an adult with an unmarked female near the hacking station at the age of five.

Conclusions

Young LSEs must depart within the same time period as experienced adults to be able to learn the strategic route over the Bosphorus and along the southeastern flyway. In 2009, most translocated juveniles departed from the hacking station too early to follow adults and compensate for their displacement from natal areas. Therefore, they were less likely than native juveniles to learn the detour around the Mediterranean, and almost all died before reaching Africa. Hatching-year mortality, however, was relatively similar between translocated and native juveniles because many native juveniles that survived the Mediterranean ultimately died in Africa.

‘Saving Abel’ seems to be a worthwhile conservation approach, with second-hatched Latvian LSEs – and probably birds of other origin – as well as native second chicks, although translocated juveniles seem to have a harder time finding the southeastern flyway on their first autumn migration from Germany than native juveniles. These results clearly demonstrate the potential for telemetry to measure the effectiveness of costly translocation and hacking programs, to identify problems in such undertakings, and thus to facilitate evidence-based conservation of migrant birds (Muriel et al., 2016; Runge et al., 2015; Sutherland et al., 2004; Vickery et al., 2014).

Acknowledgements

Our thanks go to the responsible authorities, forestry offices, etc., in Germany and Latvia for their support and the necessary permissions. The project would not have been possible without the assistance of the numerous nest wardens, foresters, hunting reserve managers, landowners and ornithologists in Brandenburg, Latvia and Mecklenburg-Western Pomerania. Many people helped the senior author with trapping the adult LSEs, especially Joachim Matthes. Andreas Hofmann and others climbed to the nests and helped deploy the PTTs to the native young birds. We thank Valdis Cīrulis, Jānis Granāts and Rimgaudas Treinys for climbing eyries in Latvia. We are grateful to the Tiltakalni Bird Station as well as the Riga Zoo and its director, Rolands Greizirš, for hosting juvenile eagles before translocation. The young eagles were fed by Agnija Graubica, Kristīna Jačmenkina, Līga Matsone and Ivonna Heidere at the Riga Zoo, and by Ilze Bergmane and Inese Smikovska at the Tiltakalni Bird Station. We are grateful to veterinarians Guna Vītola and Gunta Gabrāne at CITES Latvia for assistance in licensing translocation. Ilka Simm-Schönholz and her team raised young, second-hatched chicks during the first weeks, and Ingrid Lehnigk, together with many helpers, especially Arvid Zickuhr, Kathi Bittmann and Elke Schmidt in 2009, continued to feed young eagles at the hacking station. Stephan Weber provided valuable statistical advice. Michael McGrady proofread the manuscript, and we thank Mo Verhoeven, Jelle Loonstra, Theunis Piersma and one anonymous reviewer for constructive comments on previous versions of this paper.

Competing interests

The authors declare no competing or financial interests.

Author contributions

Conceptualization: B.-U.M., T.L., P.G., A.H., I.B., C.M., W.M.V.; Methodology: B.-U.M., U.B., T.L., P.G., A.H., I.B., C.M., W.M.V.; Software: C.M.; Formal analysis: W.M.V.; Investigation: U.B., T.L., P.G., A.H., I.B., C.M., W.M.V.; Resources: B.-U.M.; Data curation: C.M.; Writing - original draft: B.-U.M., U.B., T.L., P.G., W.M.V.; Writing - review & editing: B.-U.M., W.M.V.; Supervision: B.-U.M.; Project administration: B.-U.M., T.L., P.G., A.H., I.B.; Funding acquisition: B.-U.M.

Funding

The ‘Saving Abel’ project received very generous financial support from the German Federal Environmental Foundation (Deutsche Bundesstiftung Umwelt) (DBU 24574-33/0). Additional funding was received from the Deutscher Wildtier Stiftung (DeWiSt). Deposited in PMC for immediate release.

Data availability

Data are available from the Dryad Digital Repository (Meyburg et al., 2017): <http://dx.doi.org/10.5061/dryad.82j26>

Supplementary information

Supplementary information available online at <http://jeb.biologists.org/lookup/doi/10.1242/jeb.148932.supplemental>

References

- Agostini, N., Premuda, G., Mellone, U., Panuccio, M., Logozzo, D., Bassi, E. and Cocchi, L. (2004). Crossing the sea en route to Africa: autumn migration of some Accipitriformes over two Mediterranean islands. *Ring* **26**, 71.
- Agostini, N., Baghino, L. and Vansteelant, W. M. G. (2016). Age-related timing of short-toed snake eagle *Circaetus gallicus* migration along detoured and direct flyways. *Bird Study* **64**, 37–44.
- Åkesson, S. and Hedenström, A. (2007). How migrants get there: migratory performance and orientation. *Bioscience* **57**, 123.
- Berthold, P. and Terrill, S. B. (1991). Recent advances in studies of bird migration. *Annu. Rev. Ecol. Evol. Syst.* **22**, 357–378.
- Bijlsma, R. G. (1983). The migration of raptors near Suez, Egypt, autumn 1981. *Sandgrouse* **5**, 19–44.
- Bildstein, K. L., Bechard, M. J., Farmer, C. and Newcomb, L. (2009). Narrow sea crossings present major obstacles to migrating griffon vultures *Gyps fulvus*. *Ibis* (Lond. 1859). **151**, 382–391.
- Böhner, J. and Langgemach, T. (2004). Why each of the lesser spotted eagles *Aquila pomarina* in Brandenburg counts: results of a population simulation. *Vogelwelt* **125**, 271–281.
- Bridge, E. S., Thorup, K., Bowlin, M. S., Chilson, P. B., Diehl, R. H., Fléron, R. W., Hartl, P., Kays, R., Kelly, J. F., Robinson, W. D. et al. (2011). Technology on the move: recent and forthcoming innovations for tracking migratory birds. *Am. Inst. Biol. Sci.* **61**, 689–698.
- Chernetsov, N., Berthold, P. and Querner, U. (2004). Migratory orientation of first-year white storks (*Ciconia ciconia*): inherited information and social interactions. *J. Exp. Biol.* **207**, 937–943.
- Cresswell, W. (2014). Migratory connectivity of Palaearctic-African migratory birds and their responses to environmental change: the serial residency hypothesis. *Ibis* **156**, 493–510.
- Dejonghe, J.-F. (1980). Analyse de la migration pré-nuptiale des rapaces et des cigognes au Cap Bon (Tunisie). *Oiseau et Rev. Fr. Orn.* **50**, 125–147.
- Erni, B., Liechti, F. and Bruderer, B. (2003). How does a first year passerine migrant find its way? Simulating migration mechanisms and behavioural adaptations. *Oikos* **103**, 333–340.
- Ferguson-Lees, J. and Christie, D. A. (2006). *Raptors of the world*. Princeton, NJ: Princeton University Press.
- Freeman, G. H. and Halton, J. H. (1951). Note on an exact treatment of contingency, goodness of fit and other problems of significance. *Biometrika* **38**, 141–149.
- Gill, R. E., Douglas, D. C., Handel, C. M., Tibbitts, T. L., Hufford, G. and Piersma, T. (2014). Hemispheric-scale wind selection facilitates bar-tailed godwit circum-migration of the Pacific. *Anim. Behav.* **90**, 117–130.
- Giordano, A. (1991). The migration of birds of prey and storks in the Straits of Messina. In *Birds of Prey Bulletin No. 4* (ed. R. D. Chancellor and B.-U. Meyburg), pp. 239–250. Berlin: World Working Group of Birds of Prey.
- Graszynski, K., Langgemach, T., Meyburg, B.-U., Sömmmer, P., Bergmanis, U., Hinz, A., Börner, I. and Meergans, M. (2011). Das Jungvogelmanagement beim Schreiadler. In *Der Schreiadler im Sturzflug. Tagungsband zum 1. Schreiadlersymposium der Deutschen Wildtier Stiftung in Potsdam. 29 September 2011* (ed. A. Kinser and H. F. v. Münchhausen), pp. 74–85. Potsdam: Deutschen Wildtier Stiftung.
- Grüneberg, C., Bauer, H.-G., Haupt, H., Hüppop, O., Ryslavy, T. and Südbeck, P. (2015). The Red List of breeding birds of Germany, 5th edition, 30 Nov. 2015. *Berichte zum Vogelschutz* **52**, 19–67.
- Gschweng, M., Kalko, E. K. V., Querner, U., Fiedler, W. and Berthold, P. (2008). All across Africa: highly individual migration routes of Eleonora's falcon. *Proc. R. Soc. B Biol. Sci.* **275**, 2887–2896.
- Guilford, T. C., Åkesson, S., Gagliardo, A., Holland, R. A., Mouritsen, H., Muheim, R., Wiltchko, R., Wiltchko, W. and Bingman, V. P. (2011). Migratory navigation in birds: new opportunities in an era of fast-developing tracking technology. *J. Exp. Biol.* **214**, 3705–3712.
- Hake, M., Kjellen, N. and Alerstam, T. (2003). Age-dependent migration strategy in honey buzzards *Pernis apivorus* tracked by satellite. *Oikos* **103**, 385–396.
- Hewson, C. M., Thorup, K., Pearce-Higgins, J. W. and Atkinson, P. W. (2016). Population decline is linked to migration route in the common cuckoo. *Nat. Commun.* **7**, 12296.
- Hostetler, J. A., Sillett, T. S. and Marra, P. P. (2015). Full-annual-cycle population models for migratory birds. *Auk* **132**, 433–449.
- Kalnay, E., Kanamitsu, M., Kistler, R., Collins, W., Deaven, D., Gandin, L., Iredell, M., Saha, S., White, G., Woollen, J. et al. (1996). The NCEP/NCAR 40-year reanalysis project. *Bull. Am. Meteorol. Soc.* **77**, 437–471.
- Kays, R., Crofoot, M. C., Jetz, W. and Wikelski, M. (2015). Terrestrial animal tracking as an eye on life and planet. *Science* (80-) **348**, aaa2478.
- Kemp, M. U., Emiel van Loon, E., Shamoun-Baranes, J. and Bouten, W. (2012). RNCPE: Global weather and climate data at your fingertips. *Methods Ecol. Evol.* **3**, 65–70.
- Kerlinger, P. (1985). Water-crossing behavior of raptors during migration. *Wilson Bull.* **97**, 109–113.
- Kishkinev, D., Heyers, D., Woodworth, B. K., Mitchell, G. W., Hobson, K. A. and Norris, D. N. (2016). Experienced migratory songbirds do not display goal-ward orientation after release following a cross-continental displacement: an automated telemetry study. *Sci. Rep.* **6**, 37326.
- Klaassen, R. H. G., Hake, M., Strandberg, R., Koks, B. J., Trierweiler, C., Exo, K.-M., Bairlein, F. and Alerstam, T. (2014). When and where does mortality occur in migratory birds? Direct evidence from long-term satellite tracking of raptors. *J. Anim. Ecol.* **83**, 176–184.
- Krumenacker, T. (2012). Der Durchzug von Schreiadler *Aquila pomarina*, Wespenbussard *Pernis apivorus*, Kurzfangsperber *Accipiter brevipes*, Weißstorch *Ciconia ciconia* und Rosapelikan *Pelecanus onocrotalus* über Nordisrael – eine Bilanz aus 30 Jahren. *Limicola* **26**, 161–237.
- Langgemach, T., Sömmmer, P., Graszynski, K., Meyburg, B.-U. and Bergmanis, U. (2010). Analysis of bad breeding performance in lesser spotted eagles (*Aquila pomarina*) in Brandenburg 2009. *Otis* **18**, 51–64.
- Lerner, H., Christidis, L., Gamauf, A., Griffiths, C., Haring, E., Huddleston, C., Kabra, S., Kocum, A., Krosby, M., Kvaløy, K. et al. (2017). Phylogeny and new taxonomy of the booted eagles (Accipitriformes: Aquilinae). *Zootaxa* **4216**, zootaxa.4216.4.1.
- Leshem, Y. and YomTov, Y. (1996). The magnitude and timing of migration by soaring raptors, pelicans and storks over Israel. *Ibis* **138**, 188–203.
- LUNG, M. V. (2016). *Artenschutzrechtliche Arbeits- und Beurteilungshilfe für die Errichtung und den Betrieb von Windenergieanlagen (AAB-WEA) – Teil Vögel. Stand: 01.08.2016*. Schwerin, Government of the State of Mecklenburg, pp. 18–22.
- Mellone, U., Limiñana, R., Mallia, E. and Urios, V. (2011). Extremely detoured migration in an inexperienced bird: interplay of transport costs and social interactions. *J. Avian Biol.* **42**, 468–472.
- Mellone, U., Lucia, G., Mallia, E. and Urios, V. (2016). Individual variation in orientation promotes a 3000-km latitudinal change in wintering grounds in a long-distance migratory raptor. *Ibis* **158**, 887–893.
- Meyburg, B.-U. (1974). Sibling aggression and mortality among nestling eagles. *Ibis* **116**, 224–228.
- Meyburg, B.-U. (1978). Productivity manipulation in wild eagles. In *Birds of Prey Management Techniques* (ed. T. A. Geer), pp. 81–83. Oxford: British Falconers' Club.
- Meyburg, B.-U. (2002). On Cainism in the lesser spotted eagle (*Aquila pomarina*) and a possible explanation for the phenomenon in this and other eagle species. In *Raptors in the New Millennium* (ed. R. Yosef, M. L. Pepler and D. Miller), pp. 53–61. Eilat: International Birding & Research Center.
- Meyburg, B.-U. and Meyburg, C. (2007). Post-fledging behavior and outward migration of a hybrid greater x lesser spotted eagle (*Aquila clanga* x *A. pomarina*). *J. Raptor Res.* **41**, 165–170.
- Meyburg, B.-U. and Meyburg, C. (2009). High mortality rate in juvenile and adult birds: causes of death in lesser spotted eagles. *Falke* **56**, 382–388.
- Meyburg, B.-U., Scheller, W. and Meyburg, C. (1995). Migration and wintering of the lesser spotted eagle (*Aquila pomarina*): a study by means of satellite telemetry. *J. Ornithol.* **136**, 401–422.
- Meyburg, B.-U., Haraszthy, L., Strazds, M. N. and Schäffer, N. (2001). European species action plan for lesser spotted eagle (*Aquila pomarina*). In *European Union Action Plans for Eight Priority Bird Species*. (ed. N. Schäffer and U. Gallo-Orsi), pp. 1–24. Luxembourg: Office for Official Publications of the European Communities.
- Meyburg, B.-U., Matthes, J. and Meyburg, C. (2002). Satellite-tracked lesser spotted eagle avoids crossing water at the Gulf of Suez. *Br. Birds* **95**, 372–376.
- Meyburg, B.-U., Meyburg, C., Bělka, T., Šreibr, O. and Vrana, J. (2004a). Migration, wintering and breeding of a lesser spotted eagle (*Aquila pomarina*) from Slovakia tracked by satellite. *J. Ornithol.* **145**, 1–7.
- Meyburg, B.-U., Langgemach, T., Graszynski, K. and Böhner, J. (2004b). The situation of the lesser spotted eagle *Aquila pomarina* in Germany: the need for an action plan and active conservation. In *Raptors Worldwide* (ed. R. D. Chancellor and B. U. Meyburg). World Working Group of Birds of Prey/MME - BirdLife Hungary, Berlin and Budapest, pp. 601–613.
- Meyburg, B.-U., Meyburg, C., Mizera, T., Maciorowski, G. and Kowalski, J. (2005). Family break up, departure and autumn migration in Europe of a family of greater spotted eagles (*Aquila clanga*) as reported by satellite telemetry. *J. Raptor Res.* **39**, 462–466.
- Meyburg, B.-U., Graszynski, K., Langgemach, T., Sömmmer, P. and Bergmanis, U. (2008). Cainism, nestling management in Germany in 2004–2007 and satellite tracking of juveniles in the lesser spotted eagle (*Aquila pomarina*). *Slovak Raptor J.* **2**, 53–72.
- Meyburg, B.-U., Mendelsohn, S., Mendelsohn, J. and de Klerk, H. M. (2015). Revealing unexpected uses of space by wintering *Aquila pomarina*: how does

- satellite telemetry identify behaviour at different scales? *J. Avian Biol.* **46**, 648–657.
- Meyburg, B. U., Boesman, P., Marks, J. S. and Kirwan, G. M. (2016). Lesser spotted eagle (*Clanga pomarina*). In *Handbook of the Birds of the World Alive* (ed. J. del Hoyo, A. Elliott, J. Sargatal, D. A. Christie and E. de Juana). Barcelona: Lynx Edicions. <http://www.hbw.com/species/lesser-spotted-eagle-clanga-pomarina>
- Meyburg, B. U., Bergmanis, U., Langgemach, T., Graszynski, K., Hinz, A., Borner, I., Meyburg, C. and Vansteelant, W. M. G. (2017). Data from: Orientation of native versus translocated juvenile lesser spotted eagles (*Clanga pomarina*) on the first autumn migration. *Dryad Digital Repository*. <http://dx.doi.org/10.5061/dryad.82j26>
- Meyer, S. K., Spaar, R. and Bruderer, B. (2000). To cross the sea or to follow the coast? Flight directions and behaviour of migrating raptors approaching the Mediterranean Sea in autumn. *Behaviour* **137**, 379–399.
- Michev, T., Profirov, L. and Dimitrov, L. (2011). The autumn migration of soaring birds at Bourgas Bay, Bulgaria. *Br. Birds* **104**, 16–37.
- MLUV (2005). *Artenschutzprogramm Adler*. Potsdam: Ministerium für Ländliche Entwicklung, Umwelt und Verbraucherschutz Brandenburg (MLUV).
- Mouritsen, H. and Mouritsen, O. (2000). A mathematical expectation model for bird navigation based on the clock-and-compass strategy. *J. Theor. Biol.* **207**, 283–291.
- Mueller, T., O'Hara, R. B., Converse, S. J., Urbanek, R. P. and Fagan, W. F. (2013). Social learning of migratory performance. *Science* **341**, 999–1002.
- Muriel, R., Morandini, V., Ferrer, M., Balbontín, J. and Morlanes, V. (2016). Juvenile dispersal behaviour and conspecific attraction: an alternative approach with translocated Spanish imperial eagles. *Anim. Behav.* **116**, 17–29.
- Newton, I. (2006). Can conditions experienced during migration limit the population levels of birds? *J. Ornithol.* **147**, 146–166.
- Onrubia, A., Muñoz, A.-R., Arroyo, G. M., Ramírez, J., Cruz, A. de la, Barrios, L., Meyburg, B.-U., Meyburg, C. and Langgemach, T. (2011). Autumn migration of lesser spotted eagle *Aquila pomarina* in the Strait of Gibraltar: accidental or regular? *Ardea* **99**, 113–116.
- Oppel, S., Dobrev, V., Arkumarev, V., Saravia, V., Bounas, A., Kret, E., Veleviski, M., Stoychev, S. and Nikolov, S. C. (2015). High juvenile mortality during migration in a declining population of a long-distance migratory raptor. *Ibis* **157**, 545–557.
- Perdeck, A. C. (1958). Two types of orientation in migrating starlings, *Sturnus vulgaris*, and chaffinches, *Fringilla coelebs*, as revealed by displacement experiments. *Ardea* **46**, 1–37.
- Premuda, G., Baghino, L., Guillosson, T., Jardin, M., Tirado, M. and Esteller, V. (2007). A remarkable case of circuitous autumn migration of the booted eagle *Hieraetus pennatus* through the western and central Mediterranean. *Ardeola* **54**, 349–357.
- Robinson, W. D., Bowlin, M. S., Bisson, I., Shamoun-Baranes, J., Thorup, K., Diehl, R. H., Kunz, T. H., Mabey, S. and Winkler, D. W. (2010). Integrating concepts and technologies to advance the study of bird migration. *Front. Ecol. Environ.* **8**, 354–361.
- Rotics, S., Kaatz, M., Resheff, Y. S., Feldman Turjeman, S., Zurell, D., Sapir, N., Eggers, U., Flack, A., Fiedler, W., Jeltsch, F. et al. (2016). The challenges of the first migration: movement and behavior of juvenile versus adult white storks with insights regarding juvenile mortality. *J. Anim. Ecol.* **85**, 938–947.
- Runge, C. A., Watson, J. E. M., Butchart, S. H. M., Hanson, J. O., Possingham, H. P. and Fuller, R. A. (2015). Protected areas and global conservation of migratory birds. *Science* **350**, 1255–1258.
- Rus, A. I., Duerr, A. E., Miller, T. A., Belthoff, J. R. and Katzner, T. E. (2017). Counterintuitive roles of experience and weather on migratory performance. *Auk* **134**, 485–497.
- Schüz, E. (1950). Früh-Auflassung ostpreussischer Jungstörche in West-Deutschland durch die Vogelwarte Rossitten 1933–1936. *Bonner Zool. Beiträge* **1**, 239–253.
- Senner, N. R., Conklin, J. and Piersma, T. (2015). An ontogenetic perspective on individual differences. *Proc. R. Soc. B Biol. Sci.* **282**, 20151050.
- Sergio, F., Tanferna, A., De Stephanis, R., Jiménez, L. L., Blas, J., Tavecchia, G., Preatoni, D. and Hiraldo, F. (2014). Individual improvements and selective mortality shape lifelong migratory performance. *Nature* **515**, 410–413.
- Shamoun-Baranes, J., van Loon, E., Alon, D., Alpert, P., Yom-Tov, Y. and Leshem, Y. (2006). Is there a connection between weather at departure sites, onset of migration and timing of soaring-bird autumn migration in Israel? *Glob. Ecol. Biogeogr.* **15**, 541–552.
- Sherrod, S. K. (1982). *Hacking: A Method for Releasing Peregrine Falcons and Other Birds of Prey*. Boise, ID: The Peregrine Fund.
- Shirihai, H., Yosef, R., Alon, D. and Kirwan, G. (2000). Raptor migration in Israel and the Middle East. A summary of 30 years of field research. IBRCE, IOC, SPNI, Eilat, pp. 126–132.
- Sutherland, W. J., Pullin, A. S., Dolman, P. M. and Knight, T. M. (2004). The need for evidence-based conservation. *Trends Ecol. Evol.* **19**, 305–308.
- Thiollay, J.-M. (1975). Migration de printemps au Cap Bon. *Nos Oiseaux* **33**, 109–121.
- Thorup, K., Alerstam, T., Hake, M. and Kjellen, N. (2003). Can vector summation describe the orientation system of juvenile ospreys and honey buzzards? - An analysis of ring recoveries and satellite tracking. *Oikos* **103**, 350–359.
- Thorup, K., Alerstam, T., Hake, M. and Kjellén, N. (2006). Travelling or stopping of migrating birds in relation to wind: an illustration for the osprey. *Behav. Ecol.* **17**, 497–502.
- Thorup, K., Holland, R. A., Tøttrup, A. P. and Wikelski, M. (2010). Understanding the migratory orientation program of birds: extending laboratory studies to study free-flying migrants in a natural setting. *Integr. Comp. Biol.* **50**, 315–322.
- Thorup, K., Ortvaad, T. E., Rabøl, J., Holland, R. A., Tøttrup, A. P. and Wikelski, M. (2011). Juvenile songbirds compensate for displacement to oceanic islands during autumn migration. *PLoS One* **6**, e17903-e17903.
- Trierweiler, C., Klaassen, R. H. G., Drent, R. H., Exo, K.-M., Komdeur, J., Bailein, F. and Koks, B. J. (2014). Migratory connectivity and population-specific migration routes in a long-distance migratory bird. *Proc. Biol. Sci.* **281**, 20132897.
- Vardanis, Y., Nilsson, J.-Å., Klaassen, R. H. G., Strandberg, R. and Alerstam, T. (2016). Consistency in long-distance bird migration: contrasting patterns in time and space for two raptors. *Anim. Behav.* **113**, 177–187.
- Vickery, J. A., Ewing, S. R., Smith, K. W., Pain, D. J., Bailein, F., Škorpilová, J. and Gregory, R. D. (2014). The decline of Afro-Palaearctic migrants and an assessment of potential causes. *Ibis* **156**, 1–22.
- Vökler, F., Heinze, B., Sellin, D. and Zimmermann, H. (2014). *Rote Liste der Brutvögel Mecklenburg-Vorpommerns*. Ministerium für Landwirtschaft, Umwelt und Verbraucherschutz Mecklenburg-Vorpommern, Schwerin.
- Walls, S. S., Kenward, R. E. and Holloway, G. J. (2005). Weather to disperse? Evidence that climatic conditions influence vertebrate dispersal. *J. Anim. Ecol.* **74**, 190–197.
- Wickham, H. (2009). *ggplot2: Elegant Graphics for Data Analysis*. New York: Springer.
- Wikelski, M., Kays, R. W., Kasdin, N. J., Thorup, K., Smith, J. A. and Swenson, G. W. (2007). Going wild: what a global small-animal tracking system could do for experimental biologists. *J. Exp. Biol.* **210**, 181–186.
- Wikelski, M., Arriero, E., Gagliardo, A., Holland, R. A. R. A., Huttunen, M. J. M. J., Juvaste, R., Mueller, I., Tertitski, G., Thorup, K., Wild, M. et al. (2015). True navigation in migrating gulls requires intact olfactory nerves. *Sci. Rep.* **5**, 17061.
- Willemoes, M., Blas, J., Wikelski, M. and Thorup, K. (2015). Flexible navigation response in common cuckoos *Cuculus canorus* displaced experimentally during migration. *Sci. Rep.* **5**, 16402.
- Wiltshko, R. and Wiltshko, W. (2015). Avian navigation: a combination of innate and learned mechanisms. *Adv. Study Behav.* **47**, 229–310.

Supplementary material to main analyses

	Juvenile	Year	Sex	Hatching date	Date of placement in hacking station	Date of tagging	Weight when tagged	Age at release (days)	Release/fledging date	Departure from hacking station
Translocated, hacked juveniles	94751	2009	-	03-Jun	17-Jul	01-Aug	1595	64	06-Aug	11-Sep
	94741	2009	-	03-Jun	17-Jul	01-Aug	1770	65	07-Aug	11-Sep
	94746	2009	-	10-Jun	18-Jul	01-Aug	1595	58	07-Aug	11-Sep
	94734	2009	M	08-Jun	19-Jul	01-Aug	1445	60	07-Aug	24-Aug
	94759	2009	F	10-Jun	20-Jul	01-Aug	1645	59	07-Aug	10-Sep
	94735	2009	M	14-Jun	22-Jul	04-Aug	1400	58	11-Aug	11-Sep
	94740	2009	F	12-Jun	23-Jul	04-Aug	1620	60	11-Aug	11-Sep
	94745	2009	F	13-Jun	24-Jul	04-Aug	1625	59	11-Aug	20-Aug
	94736	2009	-	14-Jun	24-Jul	04-Aug	1575	61	14-Aug	09-Sep
	94739	2009	M	16-Jun	24-Jul	04-Aug	1400	59	14-Aug	14-Sep
	94732	2009	F	08-Jun	22-Jul	04-Aug	1660	63	10-Aug	10-Sep
	94750	2009	F?	09-Jun	22-Jul	04-Aug	1600	62	10-Aug	11-Sep
Filmed at nest	Nest1	2008	-	-	-	-	-	-	03-Aug	-
	Nest2	2010	-	-	-	-	-	-	06-Aug	-
	Nest3	2012	-	-	-	-	-	-	12-Aug	-
	Nest4	2013	-	-	-	-	-	-	07-Aug	-

Table S1. Hatching, tagging, release and departure dates of juveniles that were translocated and hacked, and fledging dates of wild juveniles that hatched in nests monitored by web-cam in Latvia in 2009. Release and fledging dates were when juveniles left their captive environment at the hacking station, or when they were no longer visible on nest camera footage.

Threshold	Translocated juvenile					Native juvenile					Native adult				
	Timing (DOY)			Longitude (°)		Timing (DOY)			Longitude (°)		Timing (DOY)		Longitude (°)		
	N	Mean	SD	Mean	SD	N	Mean	SD	Mean	SD	Mean	SD	Mean	SD	
Departure	11	254.7	2.4	14.0	1.8	8	260.6	4.6	13.3	0.3	9	259.9	5.2	14.5	2.7
50N	11	259.4	3.0	14.3	4.6	8	266.5	4.8	23.0	7.2	9	265.8	6.8	23.1	3.6
40N	9	270.0	4.2	14.9	12.8	8	274.8	7.9	24.8	10.8	9	275.1	7.2	31.5	1.9
30N	4	280.5	5.3	23.8	18.8	7	285.1	13.9	27.0	14.7	7	280.7	9.4	33.1	0.5

Table S2. Summary statistics (mean and SD) for timing (DOY) and longitude at which translocated juveniles, native juveniles, and native adults departed on migration, and at which they crossed three consecutive latitudinal thresholds.

Threshold	South-East					South					South-West				
	Timing (DOY)			Longitude (°)		Timing (DOY)			Longitude (°)		Timing (DOY)		Longitude (°)		
	N	Mean	SD	Mean	SD	N	Mean	SD	Mean	SD	Mean	SD	Mean	SD	
Departure	18	259.8	4.7	14.3	2.3	6	255.5	4.2	13.3	0.4	4	254.3	1.9	4	13.5
50N	18	265.7	5.7	23.4	4.3	6	258.8	4.8	15.5	3.0	4	260.3	1.0	4	8.9
40N	18	275.1	7.2	30.7	1.8	4	270.3	3.6	15.2	4.7	4	268.0	2.2	4	0.7
30N	15	282.3	11.5	33.3	0.5	1	279.0	-	27.4	-	2	284.5	0.7	2	-5.2

Table S3. Summary statistics (mean and SD) for timing (DOY) and longitude at which birds using different flyways departed on migration, and at which they crossed three consecutive latitudinal thresholds.

Topography and route choice

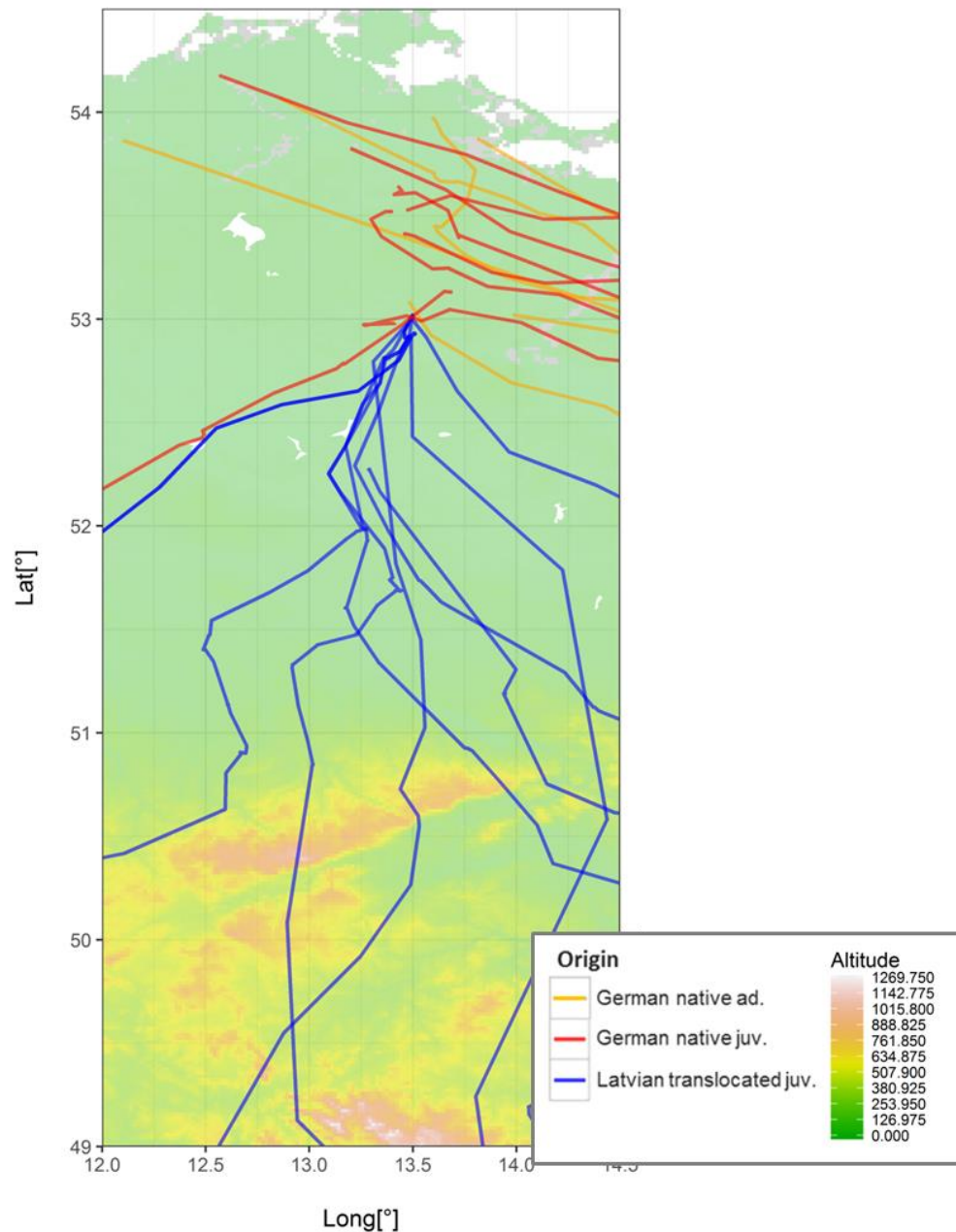


Fig S1. Departures of translocated and native juveniles and native adults in relation to the topography of eastern Germany. The landscape in eastern Germany is mostly flat, with topographic features ranging between -4 to 185 m above sea level. Flight paths do not appear to be influenced by these small topographic features. Consequently, we do not think that the topography in eastern Germany has a major influence on the travel directions of eagles, especially when compared to that of larger topographic features further along the migratory route such as the Alps, the Carpathians (Fig. S2.2) and mountain ranges in East Africa (Fig S2.3), and when compared to the large influence of social information on decision-making at departure.

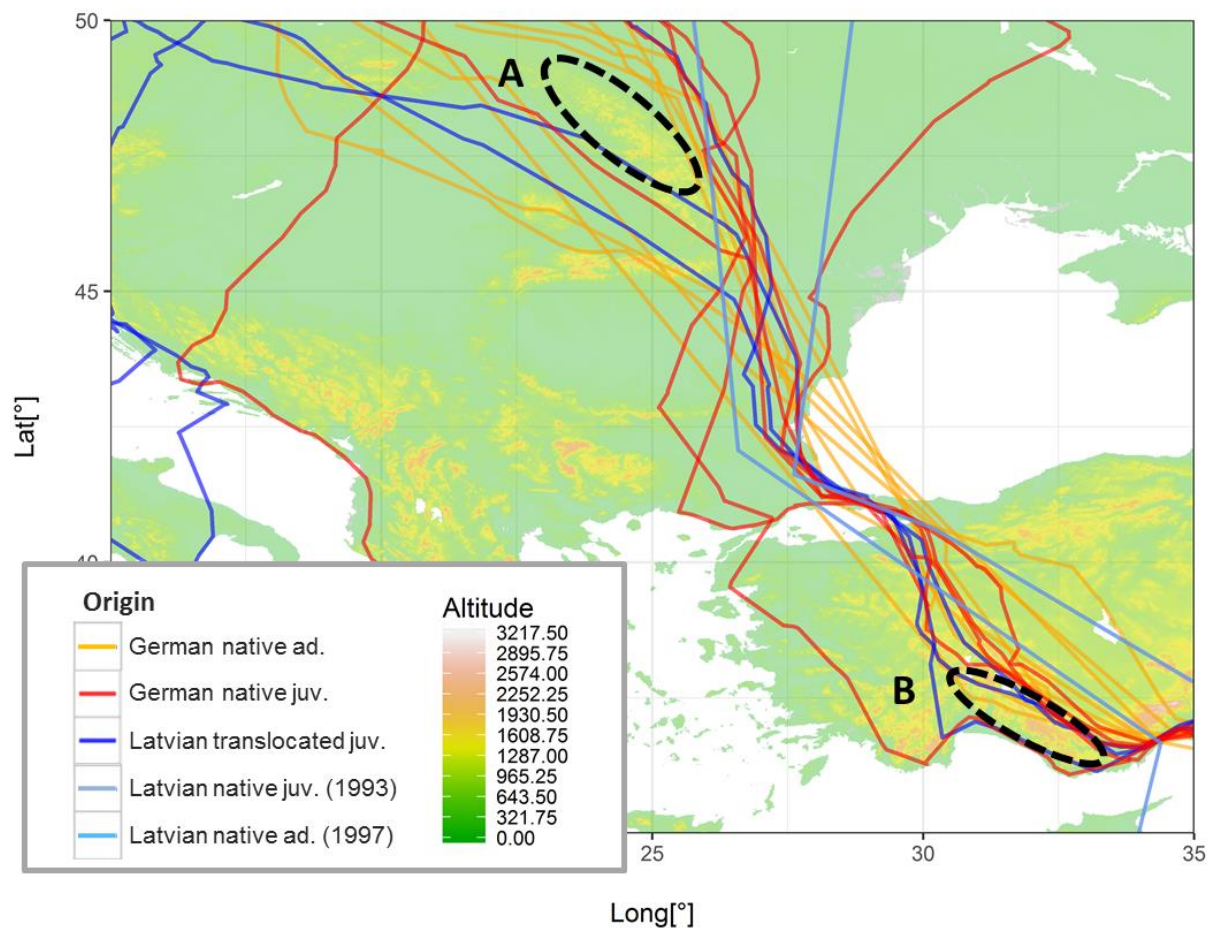


Fig S2. Tracks of LSEs in relation to the topography of eastern Europe and western Turkey. All eagles, whether juveniles or adults, traveling southeastward toward the Bosphorus tended to circumvent most of the Carpathian Mountains (A) and the highest peaks of the Taurus Mountains in southern Turkey (B). Note that the native juveniles from Latvia and German adults appear to have made long sea-crossings over the Black Sea and the Sea of Marmara when flying into Turkey. However, these birds were tracked at a lower resolution, and it is most likely that they also followed overland routes, like those used by German native juveniles and the Latvian translocated juveniles that were tracked at higher resolution.

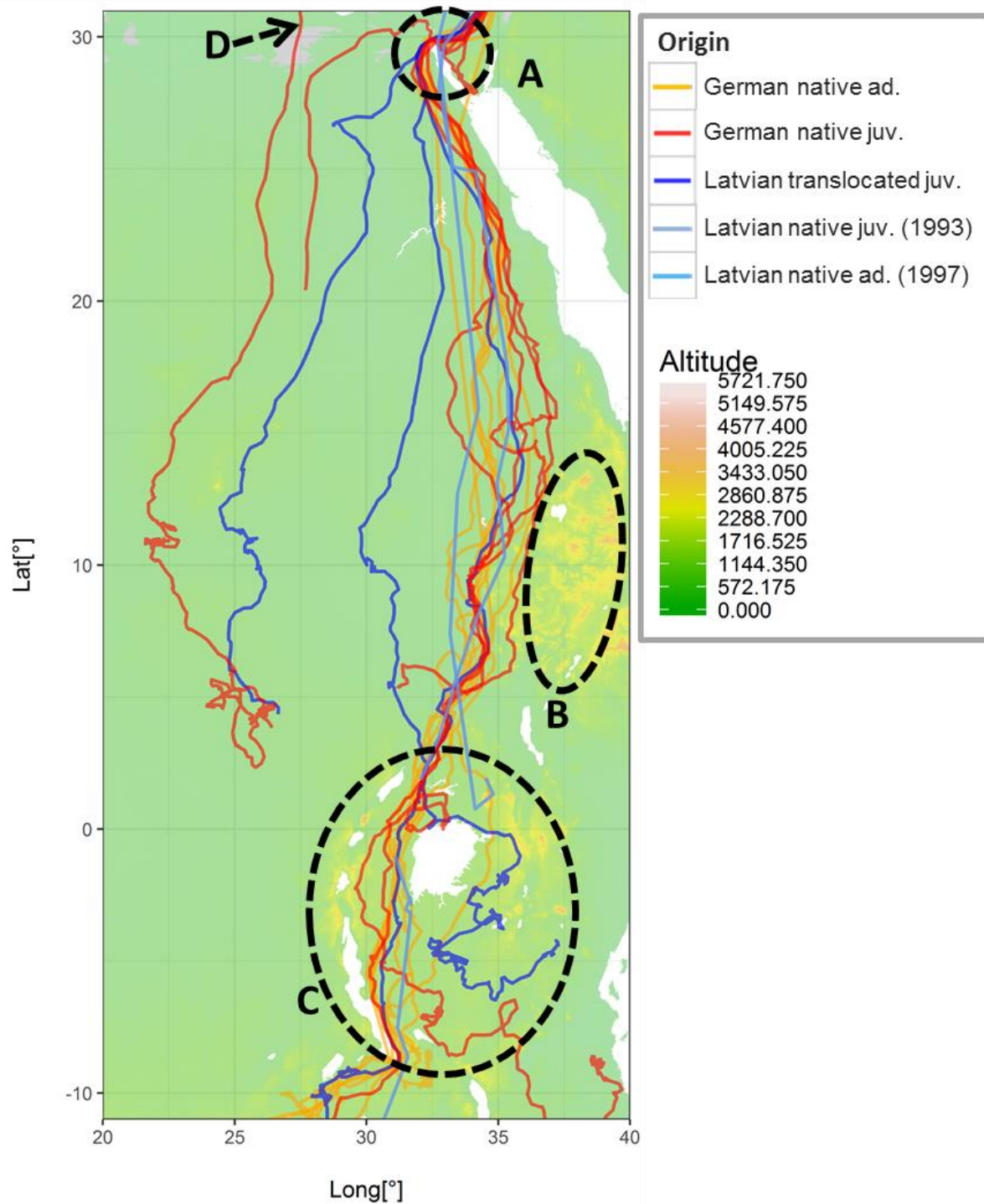


Fig S3. Tracks of LSEs in relation to the topography of eastern Africa. The majority of eagles entered Africa via Suez (A). They then continued south-southeastward, converging west of the Ethiopian Highlands at 10°N (B), then later diverging along the western and eastern branches of the Great Rift Valley, south of the equator (C). One native juvenile from Germany entered northern Africa further west, after crossing the Mediterranean from southern Greece (D). This bird stayed further east, and stopped migrating far to the north of most other eagles.

Side wind influence at departure

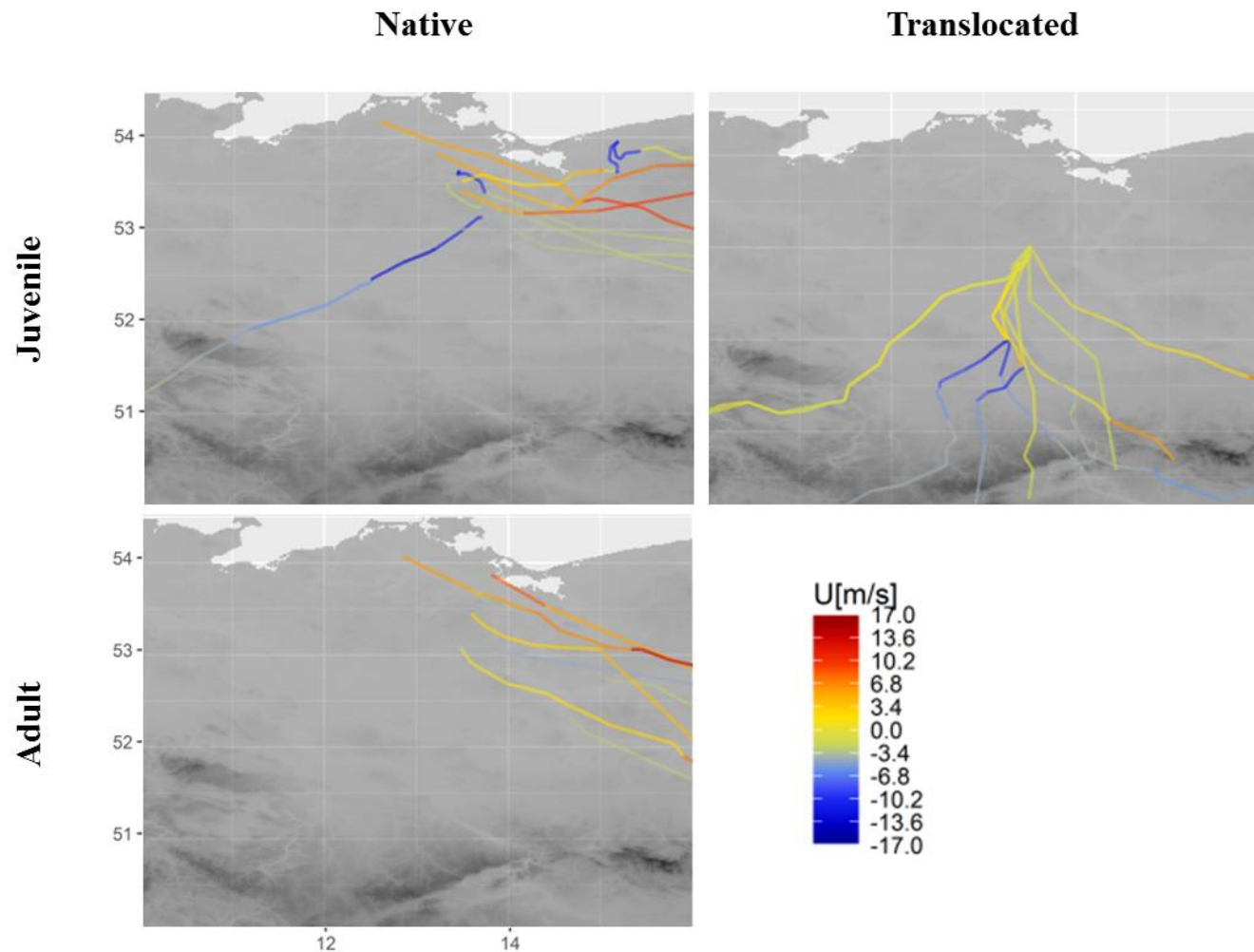


Fig S4. Departure routes of LSEs north of 50°N latitude, with segments colored according to the strength of westward(-)/eastward(+) winds at each preceding GPS-fix (U, see legend). Some eagles departing westward experienced strong westward winds (e.g., blue track top left), but others flew west in relatively light side winds (yellow track, top right). Most eagles departing eastward experienced eastward winds (orange and red tracks top and bottom left), though some experienced weak-moderate westward winds as well (green tracks all graphs).

Model	Intercept	P _{intercept}	Age	P _{intercept}	Origin	P _{origin}	Side wind	P _{side wind}	AIC	R ²
~Age+Origin+Side wind	22.74	2.26E-12	-0.26	0.91	-6.83	0.01	0.57	0.01	166.47	0.56
~Origin+Side wind	22.61	4.81E-16	-	-	-6.96	1.56*E-03	0.57	0.01	164.48	0.56
~Side wind	19.88	5.84E-16	-	-	-	-	0.84	0.00173	173.98	0.33
~Origin	23.06	<2E-16	-	-	-8.73	1.62E-04	-	-	174.87	0.43

Table S4. Generalized linear regression models explaining the longitude at which birds crossed 50°N latitude in relation to their age and origin, and the mean strength of side winds encountered north of 50°N. The most parsimonious (AIC) model explaining most variation (R²) is indicated in bold, and includes a large effect of origin (i.e., German vs. Latvian) and an additive effect of side winds. The lack of a significant contribution of ‘age’ to the model is due to the confounding difference in migratory orientation between juveniles of different origin and the similarity in migratory behavior of native juveniles and native adults. According to single effect models, the origin of the birds better explains the longitude at which different individuals cross latitude 50°N than the average side wind encountered north of latitude 50°N.

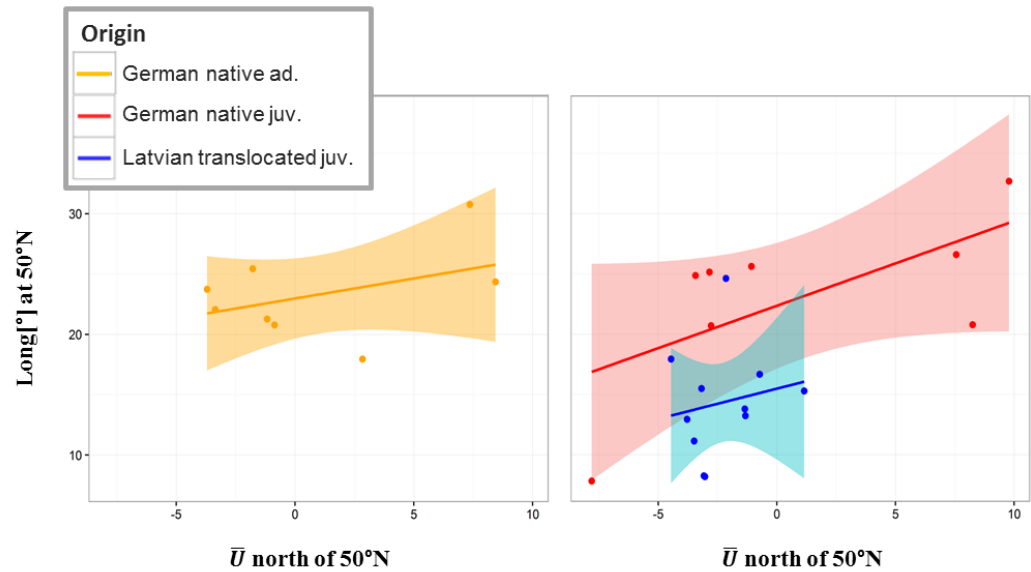


Fig S5. Linear regression models (90% confidence interval) for the longitude at which eagles crossed 50°N latitude, relative to the mean westward(-)/eastward(+) wind strength (\bar{U}) encountered north of 50°N. Models were separated according to the birds' age and origin (legend).

Group	N	Intercept	P _{intercept}	Side wind	P _{side wind}	AIC	R ²
Native German adults	8	22.98	2.76E-06	0.33	0.31	47.59	0.17
Native German juveniles	8	22.36	4.38E-05	0.70	0.09	54.94	0.41
Translocated Latvian juveniles	11	15.49	2.14E-04	0.50	0.60	69.55	0.03

Table S5. Linear regression models for the longitude at which eagles crossed 50°N latitude in relation to the mean westward(-)/eastward(+) wind strength (\bar{U}) encountered north of latitude 50°N. The effect of side winds on longitudinal displacement at departure tended to be greater for juveniles than for adults. The effect of side winds was only significant for native juveniles, possibly because they sampled a much wider range of wind conditions at departure (Fig S3.2).

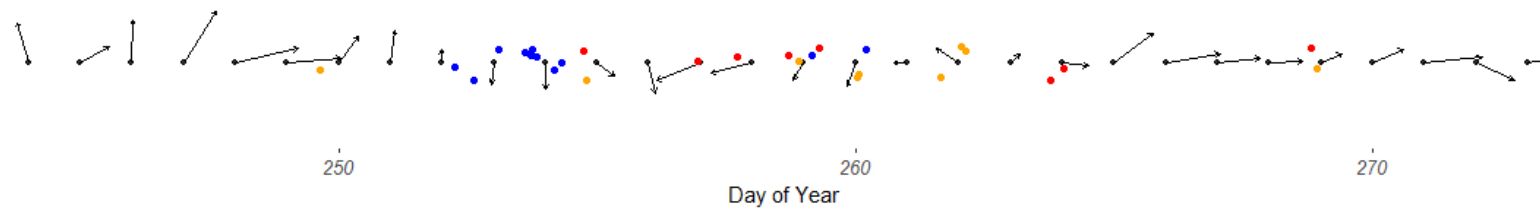


Fig S6. Wind conditions in eastern Germany at 12:00 UTC on each day in September 2009 and departure dates of all eagles. Vectors show daily wind speed and direction from Sept 1st – 30th 2009. On Sept 1st (DOY 244) the wind was blowing at 8 ms⁻¹ towards the NNW. The highly synchronized departure of hacked Latvian juveniles (blue) around Sept 11th seems to be related to a change in wind direction, from north to south. Departures of native juveniles and adults show no obvious strong correlation to wind direction or strength, although adults did seem to depart on days with eastward or southward winds. There is much more variability in the timing of departure of German juveniles and adults than of hacked Latvian eagles due to the synchronous fledging of the Latvian eagles at the same location.

INSIDE JEB

Migrating young eagles follow adults for conservation success



Lesser spotted eagle flying with GPS transmitter. Photo credit: B.-U. Meyburg.

Although the lesser spotted eagle is not listed as endangered by the IUCN, Bernd-Ulrich Meyburg from BirdLife Germany (NABU) knows that the graceful bird of prey's future is far from assured in Germany. Meyburg explains that the German population has dwindled to just 110 breeding pairs in recent decades, largely due to habitat loss and persecution by poachers during their long migration to their overwintering sites in southern Africa. In a bid to stem the destruction of the German population, Meyburg has been relocating chicks from the more stable Latvian population in the hope of boosting the declining German numbers. However, it was not clear whether the translocated chicks would survive the gruelling migration to their overwintering sites in southern Africa. To be convinced that the conservation strategy might offer hope for the German population, Meyburg needed evidence that the translocated Latvian chicks could somehow reach South Africa and return successfully.

'I initiated the conservation project in the federal state of Brandenburg in 2004', says Meyburg, explaining that the scheme has not impacted the Latvian population, as he takes only the chicks that hatch second, which usually die within a matter of days. Meyburg and his international team of conservationists rescued the chicks – referred to as 'Abels', after the biblical story of Cain and Abel – even before they had hatched and reared them in Latvia, before relocating them to a secure hide – known as a hack – in the Schorfheide-Chorin reserve

in Brandenburg. 'The small chicks are fed using a puppet that looks like the head of an adult bird', says Meyburg, adding, 'Once they are big enough to feed on their own, the food is introduced into the hacking chamber through a small hole in one of the solid walls ... to avoid imprinting on humans'.

Then, in 2009, the team fitted lightweight GPS transmitters to 12 Latvian Abels, eight lesser spotted eagle youngsters from nearby nests and nine adults to track their departures and migrations. Meyburg recalls that the majority of the Abels embarked on their migration earlier than the other migrants, departing between 10 and 11 September, with a few remaining until 16–17 September. In contrast, most of the adults set off between 16 and 19 September, with the Brandenburg-hatched chicks departing between 14 and 16 September – although one lingered until 26 September, when the final adult departed. However, when Meyburg analysed the bird's migrations, he realised that the Abels' early departure probably spelled disaster.

Instead of following the route taken by the more experienced adults – southeast across the Bosphorus and along the Eastern Mediterranean coast before entering Africa at Suez – most of the Abels struck out west before attempting to cross the Mediterranean. Meyburg explains that as eagles are large compared with many other migrants, they cannot sustain flapping flight and depend instead on thermals generated above land to remain airborne; without the benefit of lift-generating thermals, the inexperienced birds were doomed to fail as they crossed the water. Consequently, four of the youngsters perished in the Mediterranean and two died in North Africa, with only four completing the full migration.

In contrast, just one of the eight youngsters that had hatched in Germany died on the outbound journey, following the same route as the experienced adults south across the Bosphorus. 'Juvenile lesser spotted eagles are highly dependent on adult guidance in order to survive their first migration and locate the traditional winter grounds', says Meyburg.

Although it was clear that the epic round trip took a significant toll on all of the youngsters – only two of the 12 2009 Abels returned, while just 25% of the German chicks made it home – Meyburg is excited by the potential of the Abel conservation strategy. 'The greatest success was a Latvian male, which returned at the age of 2 years to the release site and fed there a few times', recalls Meyburg, adding that the youngster eventually reared his own chick near the site 3 years later. 'A new territory had been established which did not exist before', he says triumphantly.

10.1242/jeb.166454

Meyburg, B.-U., Bergmanis, U., Langgemach, T., Graszynski, K., Hinz, A., Börner, I., Meyburg, C. and Vansteelant, W. M. G. (2017). Orientation of native versus translocated juvenile lesser spotted eagles (*Clanga pomarina*) on the first autumn migration. *J. Exp. Biol.* **220**, 2765–2776.

Kathryn Knight

Spear-nosed bats train echolocation beam



A pale spear-nosed bat (*Phyllostomus discolor*). Photo credit: Kathrin Kugler.

Visual information streaming through our peripheral vision is essential for keeping us on the straight and narrow. 'When you move past an object, you expect the object to move sideways and if it does not, you know you are going to crash into it', says Lutz Wiegbe from the Ludwig-Maximilians-Universität Munich, Germany. Animals that use vision to negotiate their surroundings rely on rapid eye movements, known as saccades, which briefly track individual background objects as they appear to fly past, before flicking to the next: 'You need landmarks for orientation', says Wiegbe. However, imagine negotiating a complex forest in